



No 4

CARDIGAN
W/EYELET
PATTERN*Cardigan w/eyelet pattern*
*Instruction: Asa Christiansen***Sizes:**

(2) 4 (6) 8 (10) 12 yrs

Measurements:

Chest width: (65) 69 (73) 77 (81) 84 cm

Length: approx (36) 40 (44) 48 (52) 54 cm

Sleeve length: (24) 27 (30) 33 (36) 40 cm, or suitable length

All measurements are for the finished garment = personal body measurements + movement allowance. The measurements are all according to given tension

Yarn:

SISU (80 % wool, 20 % nylon, 50 g = 175 m)

Alternative yarn:

MINI ALPAKKA, MANDARIN PETIT, ALPAKKA SILKE, TYNN MERINOULL, BABYULL LANETT

Note: If alternative yarn is chosen be sure to check the yardage on label. The image of garment might change by using alternative yarn

Yarn required:

Rhododendron #4545: (3) 4 (4) 5 (6) 7 balls

Notions:

(7) 7 (8) 8 (9) 9 buttons

Suggested knitting needles:

Circular and double pointed 2.5 mm and 3 mm

Needle sizes are only suggestions. If your knitting shows tighter tension, use thicker needles, for looser tension use thinner needle.

Tension:

26 sts diagram and 27 sts St-st with 3 mm ndls = 10 cm

Back and front:

With 2.5 mm circular ndl cast on (181) 193 (203) 215 (225) 237 sts and work (2) 2 (2) 3 (3) 3 cm ribbing back and forth as follows: (first row = WS) 1

edge st, p1, *k1, p1*, rep from *-*, end with 1 edge st.

Change to 3 mm circular, k 1 row from WS, **while** dec (16) 18 (18) 20 (20) 22 sts evenly spaced = (165) 175 (185) 195 (205) 215 sts.Work **diagram** inside 1 edge st at each side until garment meas (24) 27 (30) 33 (36) 37 cm.

Insert marker on 1 st at each side with (42) 42 (47) 47 (52) 52 sts for each front and (79) 89 (89) 99 (99) 109 sts for the back.

Cast off 13 underarm sts at each side for armholes (= marked sts + 6 sts at each side).

Put garment aside and work sleeves.

Sleeves:

With 2.5 mm double pointed ndls cast on (42) 44 (46) 48 (50) 52 sts. Join and work 4 cm ribbing k1, p1 in rnds.

Change to 3 mm double pointed, and cont St-st in rnds.

Insert marker on first st of rnd, and when sleeve meas 5 cm inc 1 st at each side of marker.

Rep inc every (3,5) 3,5 (3,5) 3,5 (3) 3,5 cm until (52) 56 (60) 64 (68) 72 sts on rnd.

Cont until sleeve meas (24) 27 (30) 33 (36) 40 cm, or suitable length.

Cast off 13 center underarm sts.

Put aside and work other sleeve the same.

Raglan:Transfer sleeve sts to the circular 3 mm garment ndl, placing one sleeve above each armhole cast-off, **at the same time** k2tog at each junction = (213) 231 (249) 267 (285) 303 sts.Insert marker on 1 st at each junction. Work 4 rows St-st and **diagram** as before.Cont in this manner, **at the same time** dec for raglan on RS rows at each marker as follows: work until 1 st before marked st, sl 2 k-wise (as working k2tog), k1, psso.

If not enough sts for 1 yo + 2 st tog, or 3 sts for the knot, work St-st over these sts.

Rep raglan dec on alt rows a total of (15) 17 (19) 21 (23) 25 times = (93) 95 (97) 99 (101) 103 sts.

Cont raglan dec when possible, **at the same time** cast off for neck at beg of every row at each side:

Size 2 and 4 yrs: 11 sts once, 8 sts once.

Size 6 and 8 yrs: 12 sts once, 8 sts once.

Size 10 and 12 yrs: 13 sts once, 8 sts once.

Where possible there are now (17) 19 (21) 23 (25) 27 times of raglan dec. Cast off.

Finishing:

Sew tog underarm openings

Button band:

Left front edge girl/right front edge boy.

With 2.5 mm circular ndl knit up 1 st every st/row, but skip every 4th st/row to approx. (97) 101 (105) 109 (113) 117 sts.

Number of sts a multiple of 2+1.

Work 2,5 cm ribbing back and forth as for back and front.

Cast off rib-wise.

Buttonhole band:

Work in the same manner at other side but after 1 cm work (7) 7 (8) 8 (9) 9 buttonholes evenly spaced.

The lower approx 1 cm from edge, the upper at neckband. This is done later

Buttonhole:

k/p2tog, 1 yo.

Neckband:

With 2.5 mm circular ndl knit up sts as for front bands to approx (85) 89 (93) 97 (101) 105 sts.

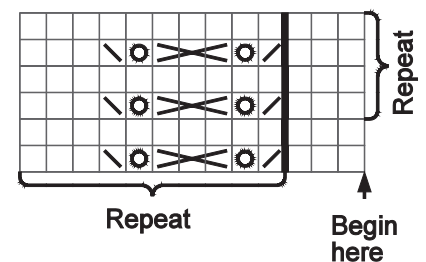
Number of sts a multiple of 2+1.

Work 2,5 cm ribbing as fronts.

Remember last buttonhole.

Cast off rib-wise.

Sew buttons on.



□ k on RS, p on WS

⊗ 1 yo

⊠ k2tog

⊞ sl 1. k1, psso

⊠ work (k3tog, k3tog, k3tog) in the same 3 sts

