





No 9

# GRANDPA SHIRT

Sweater w/slit at neck  
Instruction: Åsa Christiansen

## Sizes:

(2) 4 (6) 8 (10) 12 yrs

## Measurements:

Chest width: (67) 70 (73) 77 (83) 87 cm

Length: approx (36) 40 (44) 48 (52) 54 cm

Sleeve length: (23) 26 (29) 32 (35) 40 cm, or suitable length

All measurements are for the finished garment = personal body measurements + movement allowance. The measurements are all according to given tension

## Yarn:

SISU (80 % wool, 20 % nylon,  
50 g = 175 m)

## Alternative yarn:

MINI ALPAKKA, MANDARIN PETIT,  
ALPAKKA SILKE, TYNN  
MERINOULL, BABYULL LANETT

Note: If alternative yarn is chosen be sure to check the yardage on label. The image of garment might change by using alternative yarn

## Yarn required:

Blue melange #6324: (3) 4 (5) 5 (6) 7 balls

## Notions:

3 buttons

## Suggested knitting needles:

Circular and double pointed 2.5 mm and 3 mm

Needle sizes are only suggestions. If your knitting shows tighter tension, use thicker needles, for looser tension use thinner needle.

## Tension:

24 sts and 40 rnds pattern with 3 mm ndls = 10 cm

## Back and front:

With 3 mm circular ndl cast on (160) 168 (176) 184 (200) 208 sts. Join and work **diagram** in rounds until garment meas (24) 27 (30) 33 (36) 37 cm.

Insert marker on 1 st at each side with (79) 83 (87) 91 (99) 103 sts between markers.

Cast off 7 sts at each side for armholes (= marked st + 3 sts at each side).

Put garment aside and work sleeves.

## Sleeves:

With 3 mm double pointed ndls cast on (36) 40 (44) 44 (48) 48 sts. Join and work **diagram** in rnds.

Insert marker on first st of row.

When sleeve meas 3 cm inc 1 st at each side of marker. Rep inc every (2,5) 3 (3,5) 3 (3) 3 cm until (52) 56 (60) 64 (68) 72 sts on rnd.

Cont until sleeve meas (23) 26 (29) 32 (35) 40 cm. End with the same row in diagram as for back and front.

Cast off 7 center underarm sts.

## Raglan:

Transfer sleeve sts to the circular 3 mm garment ndl, placing one sleeve above each armhole cast-off. At the same time k2tog at each junction and insert marker on these sts (= 4 markers) = (232) 248 (264) 280 (304) 320 sts on rnd.

Work St-st on marked sts further on.

Front slit: Cast off the 5 center front sts, cont to end of rnd, cut yarn and beg again at slit working pattern back and forth.

Ensure that pattern continues correctly as before and dec for raglan on RS rows as follows: Work until 1 st before marker, sl 2 (as working k2tog), k1, pssso = 8 sts dec.

Rep raglan dec on alt rows a total of (13) 15 (15) 17 (18) 19 times = (123) 123 (139) 139 (155) 163 sts.

Cont raglan dec and cast off 2 sts at beg of every row for neck until (6) 6 (7) 7 (8) 8 times at each side = (51) 51 (55) 55 (59) 67 sts.

Leave sts on ndl for neck.

## Finishing:

Sew underarm openings.

## Slit band:

Right side: With 2.5 mm ndl knit up approx 1 st every st/row but skip every 4th st/row at slit edge.

K 9 rows back and forth. Cast off.

Work other side in the same manner but work 3 buttonholes evenly spaced on 4<sup>th</sup> row.

The lower approx 2 cm from edge, the upper at neckband. This is done later.

**Buttonhole:** k2tog, 1 yo.

## Neckband:

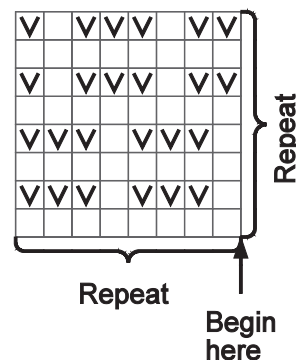
Transfer sts at neck to 2.5 mm circ ndl and knit up approx 1 st every st/row, but skip every 4th st/row at cast-off

edge and slit edges to approx (89) 91 (95) 99 (101) 105 sts.

K 9 rows back and forth. Remember last buttonhole. Cast off

Place left slit band over right band and sew at bottom of slit with hidden sts.

Sew buttons on.



☐ k on RS, p on WS  
☒ p on RS, k on WS

