



No 4

LINDEN
SWEATER*Raglan sweater w/eyelet pattern**Instruction: Anita Brathetland***Sizes:**

(S) M (L) XL (XXL)

Measurements:

Bust: (95) 100 (110) 115 (125) cm

Length: approx (56) 57 (59) 60 (63) cm

Sleeve length: 47 cm, or suitable length

All measurements are for the finished garment = personal body measurements + movement allowance. The measurements are all according to given tension

Yarn:

SILK MOHAIR (60 % kid mohair, 15 % wool, 25 % silk, 50 g = 280 m)

Yarn required:**Alternative 1, solid color (2 strands of same color):**

Lilac #4612: (4) 5 (5) 5 (6) balls

Alternativ 2, mélange (1 strand of each color):

Lilac #4612: (2) 3 (3) 3 (3) balls

Pink melange #4023: (2) 3 (3) 3 (3) balls

Suggested knitting needles:

Circular and double pointed 5 mm

Needle sizes are only suggestions. If your knitting shows tighter tension, use thicker needles, for looser tension use thinner needle.

Tension:16 sts St-st with double yarn
(2 strands) and 5 mm ndls = 10 cm**Work entire garment with double yarn.****Back and front:**

With double yarn and 5 mm circular ndl cast on (152) 160 (176) 184 (200) sts. Join and work 4 cm ribbing k1, p1 in rnds.

Insert marker on 1 st at each side with (79) 79 (87) 95 (103) sts for front and (71) 79 (87) 87 (95) sts for the back.

Cont **diagram** until work meas approx 35 cm.End with 1st or 5th pattern rnd, **while** casting off 7 sts at each side for

armholes (= marked st + 3 sts at each side).

Put garment aside and work sleeves.

Sleeves:

With double yarn and 5 mm double pointed ndls cast on (32) 32 (34) 34 (36) sts. Join and work 4 cm ribbing k1, p1 in rnds.

K 1 rnd, **while** inc (24) 24 (30) 30 (36) sts evenly spaced = (56) 56 (64) 64 (72) sts.

Insert marker on center underarm st.

Cont **diagram** until sleeve meas 47 cm, or suitable length.End with the same pattern rnd as back and front, **at the same time** cast off 7 center underarm sts (= marked st + 3 sts at each side).

Put aside and work other sleeve the same.

Raglan:

Transfer sleeve sts to the circular 5 mm garment ndl, placing one sleeve above each armhole cast-off = (236) 244 (276) 284 (316) sts.

Insert marker at each junction = 4 markers.

Rnd beg at a junction on the back.

Work 1 rnd **diagram**. Cont **diagram** and on next rnd dec for raglan as follows: Before markers: k2tog. After markers: sl 1, k1, psso = 8 sts dec.

Rep dec on alt rnds a total of (12) 13 (14) 15 (16) times = (140) 140 (164) 164 (188) sts.

Transfer the 19 center front sts for neck to spare ndl.

Cut yarn and beg again at neck.

NOTE: Work all raglan dec on RS rows.Cont **diagram** back and forth and cast off (1) 1 (2) 2 (2) sts at beg of every row at each side, **at the same time** cont raglan dec as before where possible 7 times more, and a total of (19) 20 (21) 22 (23) times of dec are finished on the back.

Leave rem sts on ndl for neckband.

Finishing:

Sew underarm openings

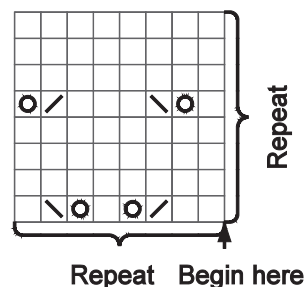
Neckband:

With double yarn and small circular ndl transfer sts from spare ndls and knit up sts at neck edge.

Join and k 1 rnd, **while** adjusting number of sts to (86) 88 (90) 92 (94).

Work 4 cm ribbing k1, p1.

Cast off rib-wise.



- ☐ k on RS, p on WS
- ☒ 1 yo
- ☒ k2tog
- ☒ sl 1, k1, psso

