



No 9

FLOWER BUD
SWEATERSweater w/popcorn pattern
Instruction: Liv Stangeland**Sizes:**

(S) M (L) XL-XXL

Measurements:

Bust: (104) 109 (114) 119 cm

Length: approx (56) 58 (60) 62 cm

Sleeve length: 46 cm, or suitable length

All measurements are for the finished garment = personal body measurements + movement allowance. The measurements are all according to given tension

Yarn:BØRSTET ALPAKKA (96 % alpaca,
4 % nylon, 50 g = 110 m)**Yarn required:**

Nude #3522: (7) 8 (8) 9 balls

Suggested knitting needles:Circular and double pointed 4.5 mm
and 5 mm

Needle sizes are only suggestions. If your knitting shows tighter tension, use thicker needles, for looser tension use thinner needle.

Tension:

16 sts St-st with 5 mm ndls = 10 cm

Edge st: k every row**Back and front:**With 4.5 mm circular ndl cast on (166)
174 (182) 190 sts. Join and work 3 cm
ribbing k1, p1 in rnds.Insert marker at sides with (83) 87
(91) 95 sts for each part.Change to 5 mm circular, and cont
St-st until work meas (23) 25 (27) 29
cm. Insert marker on center front st.Work **diagram** at front and when
garment meas (38) 39 (40) 41 cm,
cast off 6 sts at each side for
armholes (= 3 sts at each side of
markers). Work each part separately.**Back:**

= (77) 81 (85) 89 sts.

Cont St-st back and forth and cast off
for armhole at beg of every row at
each side 2 sts (4)4(5)5 times, 1 st
(2)3(2)3 times = (57) 59 (61) 63 sts.Cont until garment meas (53) 55 (57)
59 cm.Cast off the (25) 25 (27) 27 center sts
for neck and work each side
separately.Cast off at neck on alt rows 2 sts
once, 1 st once.Cont until garment meas (56) 58 (60)
62 cm.Cast off rem (13) 14 (14) 15 shoulder
sts.Work other side the same but in a
mirror image.**Front:**

= (77) 81 (85) 89 sts.

Cont St-st and **diagram** back and
forth, **while** casting off for armholes
as the back.Cont popcorn pattern on RS of work,
and when garment meas (48) 50 (52)
54 cm cast off the (15) 15 (17) 17
center sts for neck and work each
side separately. Cont **diagram** where
it is possible, and cast off at neck on
alt rows 3 sts once, 2 sts twice, 1 st
once.Cont until garment meas (56) 58 (60)
62 cm.

Cast off

Work other side the same but in a
mirror image.**Sleeves:**With 4.5 mm double pointed ndls cast
on (36) 38 (40) 42 sts. Join and work
4 cm ribbing k1, p1 in rnds.Change to 5 mm double pointed and
cont St-st. Insert marker on first and
last st of rnd and when sleeve meas 7
cm inc 1 st at each side of marker
(inc: pick up yarn between 2 sts and k
tbl this new st). Rep inc every (4) 4 (4)
3,5 cm until (54) 58 (60) 64 sts on rnd.
Cont until sleeve meas 46 cm, or
suitable length.Cast off 6 center underarm sts (=
marked sts + 2 sts at each side).**Sleeve cap:**Cont St-st back and forth and cast off
at beg of every row at each side 2 sts
(4)4(4)5 times, 1 st (3)4(4)3 times =
(26) 28 (30) 32 sts. Cont until sleeve
cap meas (8) 9 (10) 11 cm.Cast off at beg of row at each side
first 1 st once all sizes, then 2 sts
(2)1(1)2 times, 3 sts (1)2(1)2 times, 4
sts (0)0(1)0 time.

Cast off rem 10 sts.

Work other sleeve the same.

Finishing:

Sew shoulder seams.

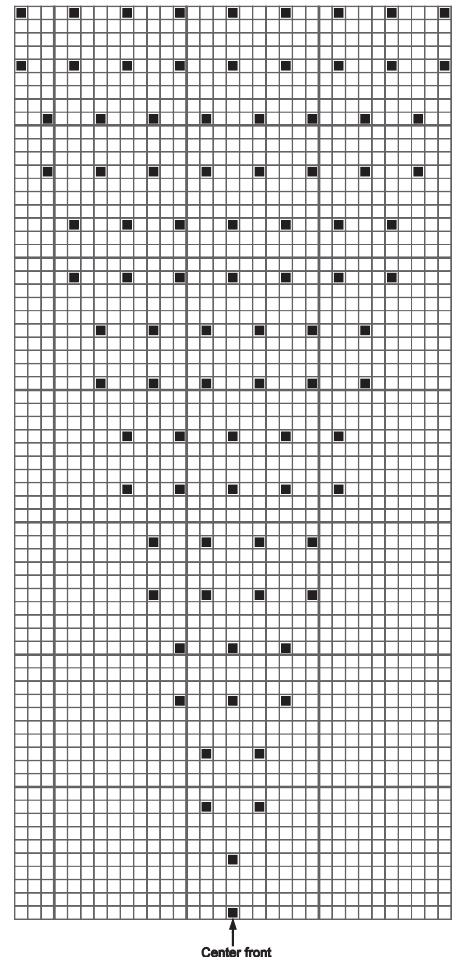
Neckband:With 4.5 mm circular ndl knit up at
neck edge 1 st every st/row, but skip
every 4th st/row to approx (78) 80 (82)
86 sts.

Work 7 cm ribbing k1, p1 in rnds

Cast off rib-wise.

Fold neckband to WS and sew loosely
with hidden sts

Sew sleeves on.



Center front

□ k on RS, p on WS

■ work 6 sts in one sts, (k alternately in
back and front of loop) and pull yarn
making long sts. Pull the rearmost st
over sts, then next st over until 1 st
remain on ndl.