



No 3

# RAGLAN SWEATER

Raglan sweater w/structural pattern  
Instruction: Åsa Christiansen

## Sizes:

(XS) S (M) L (XL) XXL

## Measurements:

Bust: (84) 88 (96) 104 (112) 120 cm  
Length: approx (58) 60 (61) 61 (62) 62 cm  
Sleeve length: 47 cm, or suitable length

All measurements are for the finished garment = personal body measurements + movement allowance. The measurements are all according to given tension.

## Yarn:

DUO (55 % merino wool, 45 % cotton, 50 g = 124 m)

## Alternative yarn:

ALPAKKA, SMART, PEER GYNT, MANDARIN MEDI, MERINOULL

Note: If alternative yarn is chosen be sure to check the yardage on label. The image of garment might change by using alternative yarn

## Yarn required:

Dusty moss-green #9551: (7) 8 (9) 10 (11) 12 balls

## Suggested knitting needles:

Circular and double pointed 3.5 mm and 4 mm

Needle sizes are only suggestions. If your knitting shows tighter tension, use thicker needles, for looser tension use thinner needle.

## Tension:

20 sts diagram with 4 mm ndls = 10 cm

## Back and front:

With 3.5 mm circular ndl cast on (184) 194 (212) 228 (246) 264 sts. Join and work 4 cm ribbing k1, p1 in rnds. Change to 4 mm circular, p 1 rnd **while** dec (16) 18 (20) 20 (22) 24 sts evenly spaced = (168) 176 (192) 208 (224) 240 sts.

Insert marker on 1 st at each side with (83) 87 (95) 103 (111) 119 sts between markers.

Cont **diagram** in rnds until garment meas approx (39) 39 (38) 37 (37) 36 cm.

Cast off 11 sts at each side for armholes (= marked st + 5 sts at each side).

Put garment aside and work sleeves.

## Sleeves:

With 3.5 mm double pointed ndls cast on (46) 46 (48) 50 (50) 52 sts. Join and work 6 cm ribbing k1, p1 in rnds Change to 4 mm double pointed, k 1 rnd **while** inc (18) 22 (24) 26 (26) 28 sts evenly spaced = (64) 68 (72) 76 (76) 80 sts.

Insert marker on first st of rnd.

Cont **diagram** in rnds until sleeve meas 47 cm, or suitable length, ending with the same pattern rnd as back and front.

Cast off 11 underarm sts (= marked st + 5 sts at each side).

Put aside and work other sleeve the same.

## Raglan:

Transfer sleeve sts to the circular 4 mm garment ndl, placing one sleeve above each armhole cast off = (252) 268 (292) 316 (332) 356 sts.

Work 1 rnd **diagram**, at the same time k2tog at each junction = (248) 264 (288) 312 (328) 352 sts. Insert marker on each of the 4 sts and k these sts further on.

Rnd beg at a junction on the back.

Cont **diagram** and dec for raglan at each marker as follows:

Work until 1 st before marker, sl 2 k-wise (as working k2tog), k1, pss0 = 8 sts dec.

Rep raglan dec on alt rnds until (14) 16 (18) 20 (22) 24 times = (136) 136 (144) 152 (152) 160 sts.

Transfer the (17) 19 (21) 23 (25) 27 center front sts for neck to a spare ndl.

Cont to end of rnd. Cut yarn, and beg row at neck.

NOTE: Dec for raglan on RS rows further.

Cont back and forth, at the same time cast off for neck 2 sts at beg of every row and dec for raglan where this is possible 6 times more and a total of (24) 26 (28) 30 sts dec on the back.

Transfer sts to spare ndl.

## Finishing:

Sew underarm openings.

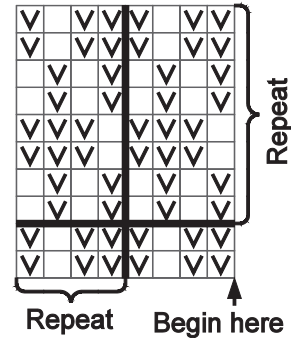
## Neckband:

Transfer sts from spare ndls to small 3.5 mm circular ndl and knit up on edge 1 st every st/row, but miss every 4th st/row to approx (100) 110 (120) 128 (136) 144 sts.

Number of sts a multiple of 2.

Work 3 cm ribbing k1, p1 in rnds.

Cast off rib-wise.



□ k on RS, p on WS  
 ▣ p on RS, k on WS