



No 1

# NORTH

Cardigan w/round yoke  
Instruction: Sandnes Garn

## Sizes:

(2) 4 (6) 8 (10) 12 yrs

## Measurements:

Chest width: (67) 72 (76) 79 (84) 90 cm

Length: (36) 40 (44) 48 (50) 52 cm

Sleeve length: (23) 26 (29) 32 (35) 40 cm, or suitable length

All measurements are for the finished garment = personal body measurements + movement allowance. The measurements are all according to given tension

## Yarn:

PEER GYNT (100 % Norwegian wool, 50 g = 91 m)

## Alternative yarn:

ALPAKKA, SMART, DUO,  
MANDARIN MEDI, MERINOULL,  
SPØT

Note: If alternative yarn is chosen be sure to check the yardage on label. The image of garment might change by using alternative yarn.

## Yarn required:

Dk.old rose #4244/Dk.blue #6572: (5) 6 (6) 7 (8) 9 balls

Lilac #5002/Sky blue #6013: 1 ball all sizes

Natural #1012/Natural #1012: 1 ball all sizes

## Notions:

(6) 6 (7) 7 (8) 8 buttons

## Suggested knitting needles:

Circular and double pointed 3.5 mm and 4 mm

Needle sizes are only suggestions. If your knitting shows tighter tension, use thicker needles, for looser tension use thinner needle.

## Tension:

20 sts St-st with 4 mm ndls = 10 cm

## Back and front:

With dk.old rose/dk.blue and 3.5 mm circ ndl cast on (127) 137 (145) 151 (161) 173 sts and work 4 cm ribbing back and forth as follows:

(1st row = WS) 1 edge st, p1, \*k1, p1\*, rep from \*-\* end with 1 edge st.

Change to 4 mm circ ndl, and cast on 5 new sts at end of row (= cutting sts. These sts are not included in pattern or given number of sts).

Insert marker at each side with (31) 33 (35) 37 (39) 42 sts for each front and (65) 71 (75) 77 (83) 89 sts for the back.

Cont St-st and when garment meas (22) 26 (29) 32 (33) 35 cm cast off 8 sts at each side for armholes (= 4 sts at each side of markers).

Put garment aside and work sleeves.

## Sleeves:

With dk.old rose/dk.blue and 3.5 mm double pointed ndls cast on (32) 34 (34) 36 (36) 38 sts. Join and work 4 cm ribbing k1, p1 in rnds.

Insert marker on first and last st of rnd.

Change to 4 mm double pointed.

Cont St-st and inc 1 st at each side of marker, and rep inc approx. every (3) 3,5 (2,5) 2,5 (2,5) 3 cm until (44) 46 (52) 56 (58) 62 sts on rnd.

Cont until sleeve meas (23) 26 (29) 32 (35) 40 cm, or suitable length.

Cast off 8 center underarm sts (= marked sts + 3 sts at each side of marker).

Put aside and work other sleeve the same.

## Yoke:

Transfer sleeve sts to the circular 4 mm garment ndl, placing one sleeve above each armhole cast-off = (183) 197 (217) 231 (245) 265 sts.

Insert marker at each junction.

Dec for raglan as follows: Before marker, sl 1, k1, psso and after marker, k2tog and = 8 sts dec.

Rep dec on alt rnds a total of (1) 2 (3) 4 (5) 6 times = (175) 181 (193) 199 (205) 217 sts.

Work **diagram** and dec as shown = (79) 83 (87) 91 (95) 99 sts.

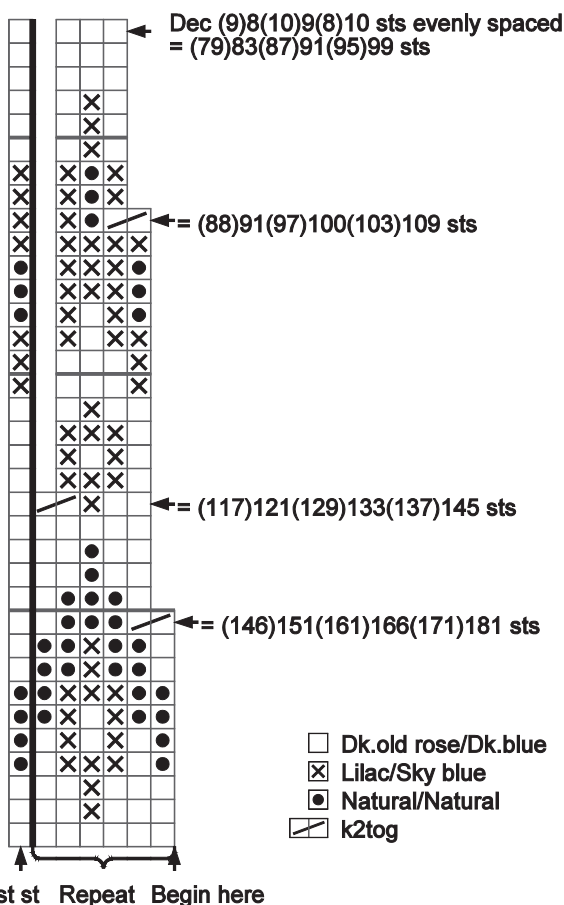
Cast off cutting sts at front and leave rem sts on ndl for neckband.

## Finishing:

With machine sew 2 seams at each side of center front on cutting sts. Cut between seams.

Zigzag cut edges.

**TIPS:** Work front bands and facings before cutting at center front.



**Left front band girl/right front band boy:**

With dk.old rose/dk.blue and 3.5 mm circ ndl pick up and knit 1 st every st/row, but skip every 4<sup>th</sup> st/row to approx. (77) 85 (93) 101 (105) 109 sts.

Number of sts a multiple of 2+1.

Work 3 cm ribbing back and forth as for garment.

Cast off rib-wise.

**Right front band girl/left front band boy:**

Work as the other front band, but with (6) 6 (7) 7 (8) 8 buttonholes evenly spaced after approx. 1 cm.

The lower approx 2 cm from cast-on, the upper at neckband. This is done later.

Buttonhole: Cast off 2 sts. Next row: cast on 2 sts above the cast-off.

**Facing:**

From WS, with dk.old rose/dk.blue and 3.5 mm circ ndl knit up 1 st every st on first row of front band.

Work 5 rows St-st back and forth.

Cast off.

Fold facing over cut edge and sew with hidden sts.

Work other side the same.

**Neck:**

Transfer sts at neck to 3.5 mm circ ndl and with dk.old rose/dk.blue knit up 6 sts on each front band = (91) 95 (99) 103 (107) 111 sts on ndl.

Work 3 cm ribbing back and forth as for garment.

Remember last buttonhole.

Cast off rib-wise.

Sew at center underarm.

Sew buttons on.



