



No 2

# ELGSETER SWEATER

Ladies sweater

Instruction: Sandnes Garn

## Sizes:

(XS) S (M) L (XL) XXL

## Measurements:

Bust: (84) 92 (100) 108 (116) 124 cm

Length: approx (58) 59 (60) 62 (63) 64 cm

Sleeve length: 47 cm, or suitable length

All measurements are for the finished garment = personal body measurements + movement allowance. The measurements are all according to given tension

## Yarn:

PEER GYNT (100 % Norwegian wool, 50 g = 91 m)

## Alternative yarn:

ALPAKKA, SMART, DUO, MANDARIN MEDI, MERINOULL, SPØT

Note: If alternative yarn is chosen be sure to check the yardage on label. The image of garment might change by using alternative yarn.

## Yarn required:

Golden nude #3522: (8) 9 (10) 11 (12) 13 balls

Terracotta #3845: (1) 1 (1) 1 (2) 2 balls

Yellow sand #2134: 1 ball all sizes

Blue melange #6324: 1 ball all sizes

## Suggested knitting needles:

Circular and double pointed 3.5 mm and 4 mm

Needle sizes are only suggestions. If your knitting shows tighter tension, use thicker needles, for looser tension use thinner needle.

## Tension:

20 sts St-st with 4 mm ndls = 10 cm

## Back and front:

With golden nude and 3.5 mm circular ndl cast on (168) 184 (200) 216 (232) 248 sts. Join and work 6 cm ribbing k1, p1 in rnds

Change to 4 mm circ ndl.

Insert marker at sides with (84) 92 (100) 108 (116) 124 sts for each part.

Cont St-st and when garment meas approx (39) 38 (38) 38 (40) 40 cm cast off 8 sts at each side for armholes (= 4 sts at each side of markers).

Put garment aside and work sleeves.

## Sleeves:

With golden nude and 3.5 mm double pointed ndls cast on (40) 42 (44) 46 (48) 52 sts. Join and work 6 cm ribbing k1, p1 in rnds.

Change to 4 mm double pointed, k 1 rnd, **while** inc evenly spaced to (46) 48 (50) 52 (54) 58 sts. Insert marker on first and last st of rnd.

Cont St-st and when work meas 8 cm inc 1 st at each side of marker. Rep inc every (5,5) 4,5 (4) 3 (2,5) 2,5 cm until (60) 64 (68) 76 (80) 84 sts on rnd.

Cont until sleeve meas 47 cm, or suitable length.

Cast off 8 center underarm sts (= marked sts + 3 sts at each side).

Put aside and work other sleeve the same.

## Raglan:

Transfer sleeve sts to the circular 4 mm garment ndl, placing one sleeve above each armhole cast-off = (256) 280 (304) 336 (360) 384 sts.

Insert marker on first st on each sleeve, first st on front and first st on the back = 4 markers and 1 st at each junction.

Beg rnd at right side on the back.

Work **diagram**, beg by arrow at **each marker**, **while** dec for raglan on (4th) 4th (4th) 2nd (2nd) 2nd rnd as follows: Work until 2 sts before marker, sl 1 k-wise, k1, pssso, k1 (marker), k2tog = 8 sts dec.

Rep dec on alt rnds until (18) 19 (21) 22 (25) 26 times = (112) 128 (136) 160 (160) 176 sts on rnd.

Transfer the (19) 21 (23) 25 (27) 29 center front sts to spare ndl for neck.

Cut yarn and beg again at neck.

Cont back and forth and cast off 2 sts at beg of every row, **at the same time** cont raglan dec as before when possible 6 times more, and a total of (24) 25 (27) 28 (31) 32 times of dec over sts at back are finished.

When diagram is finished, cont with nude until full length.

## Neckband:

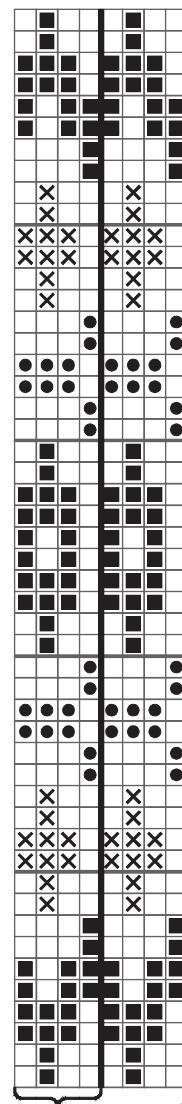
Transfer sts from spare ndl to 3.5 mm circ ndl and and with nude knit up at

neck edge 1 st every st/row, but skip every 4th st/row.

Work 2,5 cm ribbing k1, p1 in rnds, **while** on first rnd adjust number of sts to (92) 94 (96) 100 (104) 108. Cast off rib-wise.

## Finishing:

Sew tog underarm openings.



Repeat Begin here

- ☐ Golden nude
- ☒ Terracotta
- ☒ Yellow sand
- ☒ Blue melange



