



No 4

ELGSETER
CARDIGAN

Cardigan men

Instruction: Sandnes Garn

Sizes:

(XS) S (M) L (XL) XXL-XXXL

Measurements:

Chest: (93) 101 (109) 117 (125) 133 cm

Length: approx (66) 68 (70) 72 (73) 74 cm

Sleeve length: 55 cm, or suitable length

All measurements are for the finished garment = personal body measurements + movement allowance. The measurements are all according to given tension

Yarn:

PEER GYNT (100 % Norwegian wool, 50 g = 91 m)

Alternative yarn:ALPAKKA, SMART, DUO,
MANDARIN MEDI, MERINOULL,
SPØT

Note: If alternative yarn is chosen be sure to check the yardage on label. The image of garment might change by using alternative yarn.

Yarn required:

Grey melange #1042: (12) 13 (14) 16 (850) 18 balls

Ochre #2035: 1 ball all sizes

White #1002: 1 ball all sizes

Charcoal melange #1088: 2 balls all sizes

Notions:

(10) 10 (10) 11 (11) 11 buttons

Suggested knitting needles:

Circular and double pointed 3.5 mm and 4 mm

Needle sizes are only suggestions. If your knitting shows tighter tension, use thicker needles, for looser tension use thinner needle.

Tension:

20 sts St-st with 4 mm ndls = 10 cm

Back and front:

With grey melange and 3.5 mm circ ndl cast on (181) 197 (213) 229 (245)

261 sts and work 6 cm ribbing back and forth.

Change to 4 mm circular and cast on 5 new sts at end of row (= cutting sts. These sts are not included in pattern or given number of sts).

Insert marker at sides with (45) 49 (53) 57 (61) 65 sts for each front, and (91) 99 (107) 115 (123) 131 sts for the back.

Cont St-st and when garment meas approx (45) 46 (47) 48 (48) 48 cm cast off 8 sts at each side for armholes (= 4 sts at each side of markers).

Put garment aside and work sleeves.

Sleeves:

With grey melange and 3.5 mm double pointed ndls cast on (42) 44 (46) 48 (52) sts. Join and work 6 cm ribbing k1, p1 in rnds.

Change to 4 mm double pointed, k 1 rnd, **while** inc evenly spaced to (48) 50 (52) 54 (58) 60 sts. Insert marker on first st of rnd.

Cont St-st and when sleeve meas 8 cm inc 1 st at each side of marker. Rep inc every (4,5) 3,5 (3) 3 (3) 3 cm until (68) 76 (80) 84 (88) 92 sts on rnd.

Cont until sleeve meas 55 cm, or suitable length

Cast off 8 center underarm sts (= marked st + 3 sts at each side).

Put aside and work other sleeve the same.

Raglan:

Transfer sleeve sts to the circular 4 mm garment ndl, placing one sleeve above each armhole cast-off = (285) 317 (341) 365 (389) 413 sts.

Rnd beg at center front.

Insert marker on last st of right side front, one marker on last st of sleeve, one on first st of next sleeve and one on first st of front = 4 marked sts.

Work (3) 3 (3) 1 (1) 1 rnds **diagram**, and beg at arrow. Dec for raglan at each marker. Work until 1 st before marker, sl 2 k-wise (as working k2tog), k1, psso = 8 sts dec.

Rep dec on alt rnds until (19) 21 (23) 25 (27) 29 times of dec = (133) 149 (157) 165 (173) 181 sts.

Transfer the (19) 21 (23) 25 (27) 29 center sts + cutting sts at front to spare ndl for neck.

Cont back and forth, and cast off 2 sts at beg of every row, **at the same time** cont raglan dec as before when possible 6 times more and a total of

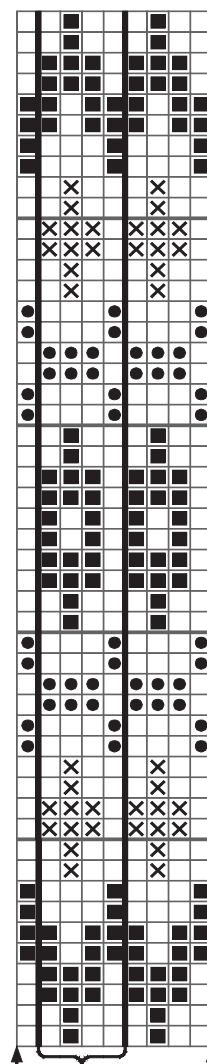
(25) 27 (29) 31 (33) 35 times of dec over sts for the back are finished.

When diagram is finished, cont with grey melange to full, given length.

Finishing:

With machine sew 2 seams at each side of center front on cutting sts, and cut between seams.

Zigzag over cut edges.

TIPS: Work front bands and facings before cutting at center front.

End here Repeat Begin here

- Grey melange
- Charcoal melange
- ⊗ Ochre
- White

Front band:

With grey melange and 3.5 mm circ ndl pick up and knit 1 st every st/row, but skip every 4th st/row on right side front to approx (119) 121 (125) 129 (131) 133 sts. Number of sts a multiple of 2+1.

Work approx 2.5 cm ribbing as for garment.

Cast off rib-wise.

Work other front band in the same manner but with (10) 10 (10) 11 (11) 11 buttonholes evenly spaced. The lower approx 2 cm from edge, the upper on neckband. This is done later.

Buttonhole: k/p2 tog, 1yo.

Neckband:

Transfer sts at neck to 3.5 mm circ ndl and with grey melange knit up approx 1 st every st/row, but skip every 4th st/row at neck edge to approx (117) 121 (125) 129 (133) 137 sts. Number of sts a multiple of 2+1.

Work approx 2½ cm ribbing back and forth as for garment. Remember last buttonhole.

Cast off rib-wise.

Sew buttons on.

Facing:

From WS and with grey melange knit up 1 st every st on first row of front band. Work 4 rows St-st back and forth.

Cast off.

Fold facing over cut edge and sew with hidden sts.

Sew underarm openings. Sew buttons on.

