



No 7

ELGSETER
SWEATER

Sweater for men

Instruction: Sandnes Garn

Sizes:

(XS) S (M) L (XL) XXL-XXXL

Measurements:

Chest: (92) 100 (108) 116 (124) 132 cm

Length: approx (66) 68 (70) 72 (73) 74 cm

Sleeve length: 55 cm, or suitable length

All measurements are for the finished garment = personal body measurements + movement allowance. The measurements are all according to given tension

Yarn:

PEER GYNT (100 % Norwegian wool, 50 g = 91 m)

Alternative yarn:

ALPAKKA, SMART, DUO, MANDARIN MEDI, MERINOULL, SPØT

Note: If alternative yarn is chosen be sure to check the yardage on label. The image of garment might change by using alternative yarn.

Yarn required:

Dk.blue #6572: (10) 11 (12) 13 (14) 15 balls

Grey-beige melange #2650: (1) 1 (1) 2 (2) 2 balls

Natural #1012: 1 ball all sizes

Burnt ochre #2544: 1 ball all sizes

Suggested knitting needles:

Circular and double pointed 3.5 mm and 4 mm

Needle sizes are only suggestions. If your knitting shows tighter tension, use thicker needles, for looser tension use thinner needle.

Tension:

20 sts St-st with 4 mm ndls = 10 cm

Back and front:

With dk.blue and 3.5 mm circ ndl cast on (184) 200 (216) 232 (248) 264 sts. Join and work 6 cm ribbing k1, p1 in rnds.

Change to 4 mm circ ndl.

Insert marker at sides with (92) 100 (108) 116 (124) 132 sts for each part. Cont St-st and when work meas (47) 47 (48) 49 (49) 49 cm cast off 8 sts at each side for armholes (= 4 sts at each side of markers).

Put garment aside and work sleeves.

Sleeves:

With dk.blue and 3.5 mm double pointed ndls cast on (42) 44 (46) 48 (52) 54 sts. Join and work 6 cm ribbing k1, p1 in rnds.

Change to 4 mm double pointed, k 1 rnd, **while** inc evenly spaced to (48) 50 (52) 54 (58) 60 sts. Insert marker on first and last st of rnd.

Cont St-st and when sleeve meas 8 cm inc 1 st at each side of marker. Rep inc every (4½) 3½ (3) 3 (3) 2½ cm until (68) 76 (80) 84 (88) 92 sts on rnd.

Cont until sleeve meas 55 cm, or suitable length.

Cast off 8 center underarm sts (= marked sts + 3 sts at each side).

Put aside and work other sleeve the same.

Raglan:

Transfer sleeve sts to the circular 4 mm garment ndl, placing one sleeve above each armhole cast-off = (288) 320 (344) 368 (392) 416 sts.

Insert marker on first st on each sleeve, first st on front and first st on the back = 4 markers and 1 st at each junction.

Beg rnd at right side on the back.

Work **diagram**, beg at arrow by each marker, **and at the same time** dec for raglan at each marker on (4th) 4th (4th) 2nd (2nd) 2nd rnd as follows:

Work until 2 sts before marker, sl 1, k1, pssso, k1 (marker), k2tog = 8 sts dec.

Rep dec on alt rnds until a total of (19) 21 (22) 24 (26) 28 times = (136) 152 (168) 176 (184) 192 sts.

Transfer the (21) 23 (25) 27 (29) 31 center front sts to spare ndl for neck.

Row beg at neck and cont back and forth. Cast off 2 sts at beg of every row, **at the same time** cont raglan dec as before where possible 6 times more.

When diagram is finished cont with dk.blue to full length.

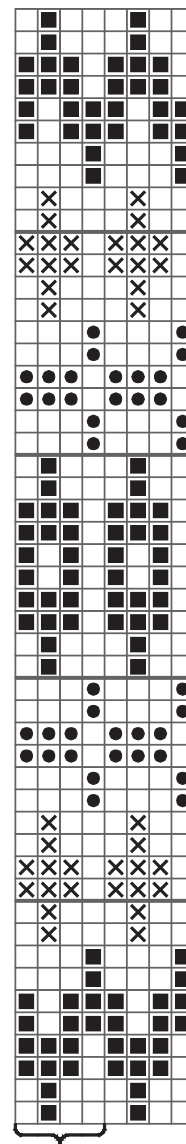
Neckband:

Transfer sts from spare ndl to 3.5 mm circ ndl and with dk.blue knit up at

neck edge 1 st every st/row, but skip every 4th st/row. Work 3 cm ribbing k1, p1, **while** on first rnd adjust number of sts to (98) 100 (102) 104 (106) 108. Cast off rib-wise.

Finishing:

Sew underarm openings.



Repeat Begin here

- ☐ Dk blue
- ☒ Grey-beige melange
- ☒ Burnt ochre
- ☒ Natural

