



No 4

INCA HAT

*Inca hat w/clover pattern**Instruction: Åsa Christiansen***Sizes:**

(2-4) 6-8 (10-12) yrs

Yarn:KOS (62 % baby alpaca, 9 % wool,
29 % nylon, 50 g = 150 m)**Yarn required:**Green melange #7270: 1 ball all sizes
Dusty pastel blue #7522: 1 ball all sizes**Suggested knitting needles:**

Circular and double pointed 5.5 mm

5.5 mm crochet hook

Needle sizes are only suggestions. If your knitting shows tighter tension, use thicker needles, for looser tension use thinner needle.

Tension:

16 sts St-st with 5.5 mm ndls = 10 cm

Edge st: k every row**Earflap:**With green melange and circular ndl cast on (7) 7 (7) sts and p 1 row from WS. Cont St-st back and forth, **while** inc 1 st inside 1 edge st at each side (inc = pick up yarn between 2 sts and k tbl this new st). Rep inc every 4th row until (15) 17 (19) sts on row.

Cont without inc until earflap meas (6) 7 (8) cm.

Put earflap aside and work one more in the same manner.

Hat:

Transfer sts for earflaps to the same circular ndl casting on (11) 11 (13) sts between the flaps at center back.

Cont St-st back and forth, **at the same time** inc on alt rows 1 st twice at each side inside 1 edge sts = (45) 49 (55) sts.

Cast on (21) 23 (23) sts between earflaps at center front = (66) 72 (78) sts. Join and cont in rnds.

Work 2 rnds St-st. Cut yarn

Insert marker at center back = beg of rnd and work **diagram** in rnds.

Cont with green melange until work meas (12) 13 (14) cm at center front.

Dec as follows: *k(9) 10 (11), k2tog*, rep from *-* in the rnd = (60) 66 (72) sts.

Work 1 rnd without dec.

Next rnd: *k(8) 9 (10), k2tog*, rep from *-* in the rnd = (54) 60 (66) sts.

Work 1 rnd without dec.

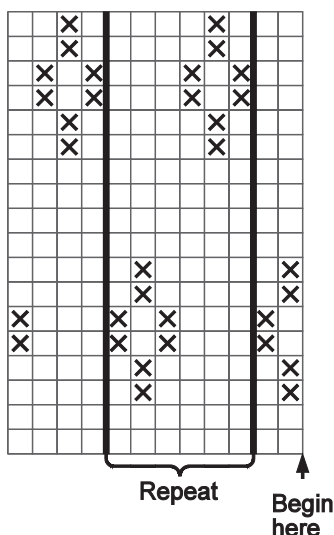
Cont dec in the same manner, but with 1 st less between each dec until 30 sts rem.

Rep dec every rnd until 6 sts rem.

Cut yarn, pull through sts, gather and fasten well

Finishing:

With green melange and crochet hook work 1 rnd sc at edge of hat



□ Green mélange
 ⊗ Dusty pastel blue

