

NORD

SANDNES GARN

THE NORWEGIAN
YARN FACTORY
SINCE 1888



NORD SWEATER

FROM NECK DOWN

#NORDGENSER / INSTRUCTION: SANDNES GARN
KNITTING SKILL LEVEL *** MEDIUM

SIZE

(XS) S (M) L (XL) 2XL (3XL)

MEASUREMENTS

Bust: (103) 108 (115) 120 (127) 134 (139) cm

Length: approx (55) 56 (57) 58 (59) 61 (62) cm

Sleeve length: 48 cm, or suitable length

All measurements are for the finished garment = personal body measurements + movement allowance. The measurements are all according to given tension.

THE SWEATER

Work garment from neck down and beg with neckband. Work turning rnds with GSR to create and shape front neckline.

Work St-st with pattern according to diagram and inc for round yoke.

YARN

SILK MOHAIR (60 % kid mohair, 15 % wool, 25 % silk, 50 g = 280 m)

YARN REQUIRED

MAIN COLOR

Beige melange #2650/Gray melange #1022/Rose cheek #4012: (3) 3 (4) 4 (4) 5 (5) balls

COLOR 1

Deep blue #6081/Dusty olive green #9071/Deep forest green #8581: 1 ball each size

COLOR 2

Brown sugar #2543/Bluebell #6016/Acorn #3161: 1 ball each size

SUGGESTED KNITTING NEEDLES

Circular and double pointed 3 mm and 3.5 mm

Small 3 mm circular for neckband

Needle sizes are only suggestions. If your knitting shows tighter tension, use thicker needles, for looser tension use thinner needle

TENSION

23 sts St-st with 3.5 mm ndls = 10 cm

INC RIGHT

From back insert left ndl under yarn between 2 sts and k the new stitch.

INC LEFT

From front insert left ndl under yarn between 2 sts and k tbl the new stitch.

GSR = GERMAN SHORT ROWS

After each turning always sl first st p-wise with yarn in front of work, lead yarn over right ndl and pull yarn firmly at the back until 2 loops on ndl. The 2 loops count as 1 st. When working rows/rnds with loops work loops tog to 1 st.

YOKE

With Color 1 or Main color and small 3 mm circular ndl cast on (96) 96 (100) 100 (104) 104 (108) sts.

Work 10 cm ribbing k1, p1 in rnds for double neckband. Change to 3.5 mm circular ndl, k 1 rnd, while inc (42) 42 (44) 44 (46) 58 (60) sts evenly spaced = (138) 138 (144) 144 (150) 162 (168) sts.

Insert marker at beg of rnd = middle back, and at middle front with (69) 69 (72) 72 (75) 81 (84) sts between markers as follows.

Work turning rows with GSR to work extra height at back in this manner:

Knit until 36 sts before middle front marker, turn, purl until 36 sts rem before middle front marker at other side, turn.

Work and turn in the same manner, but work 3,4,5 sts pass previous turning until 4 times at each side.

Work diagram and inc as shown here = (276) 276 (288) 288 (300) 324 (336) sts.

Cont St-st with Main color, and insert markers for raglan inc as follows:

Work (44) 44 (46) 47 (49) 53 (54) sts (= ½ back), work and insert marker around next st, work (48) 48 (50) 48 (50) 54 (58) sts (= sleeve), work and insert marker around next st, work (88) 88 (92) 94 (98) 106 (108) sts (= front), work and insert marker around next st, work (48) 48 (50) 48 (50) 54 (58) sts (= sleeve), work and insert marker around next st. Rnd beg here with the (88) 88 (92) 94 (98) 106 (108) sts for the back.

Work (104) 110 (116) 120 (128) 136 (140) sts (= back), transfer (66) 72 (76) 76 (82) 86 (92) sts to spare ndl for sleeve, cast on (14) 14 (16) 18 (18) 18 (20) new underarm sts, work (104) 110 (116) 120 (128) 136 (140) sts (= front), transfer (66) 72 (76) 76 (82) 86 (92) sts to spare ndl for sleeve, cast on (14) 14 (16) 18 (18) 18 (20) new underarm sts.

BACK AND FRONT

Cont with Main color.

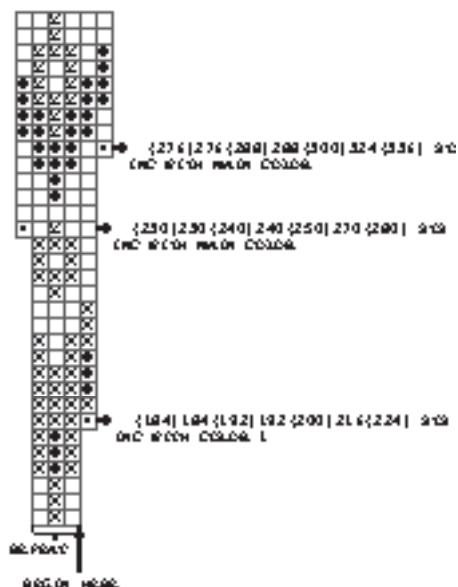
Cast off suitable loose.

SLEEVES

Work other sleeve in the same manner.

FINISHING

Fold neckband to WS and sew loosely with hidden sts.
Fasten all yarn ends.



- ☐ MAIN COLOR
☒ COLOR 1
☒ COLOR 2
☒ INC LEFT