

MERINOULL

# SADNES GARN

DEN NORSKE  
GARNFABRIKKEN  
SIDEN 1888









No 1

# WEAVE SWEATER

*Reglan sweater in weave pattern*

*Instruction: Anita Brathetland*

## Sizes:

(2) 4 (6-8) 10 (12) yrs

## Measurements:

Chest width: (63) 68 (74) 79 (85) cm

Length: approx (36) 40 (44-47) 50 (52) cm

Sleeve length: (23) 26 (29-32) 35 (40) cm, or suitable length

All measurements are for the finished garment = personal body measurements + movement allowance. The measurements are all according to given tension.

## Yarn:

MERINOULL (100 % merino wool, 50 g = 105 m)

## Alternative yarn:

PEER GYNT, SMART, ALPAKKA, DUO, MANDARIN MEDI, SPØT

Note: If alternative yarn is chosen be sure to check the yardage on label. The image of garment might change by using alternative yarn

## Yarn required:

Dusty petrol #7741: (5) 6 (7-8) 9 (10) balls

## Suggested knitting needles:

Circular and double pointed 3 mm and 3.5 mm

Needle sizes are only suggestions. If your knitting shows tighter tension, use thicker needles, for looser tension use thinner needle.

## Tension:

22 sts x 38 rnds diagram with 3.5 mm ndls = 10 x 10 cm

## 1 ridge worked in rounds:

K 1 rnd, p 1 rnd

## Back and front:

With 3 mm circular ndl cast on (138) 150 (162) 174 (186) sts. Join and work 3 ridges in rnds.

Change to 3.5 mm circular ndl.

Insert marker on 1 st at each side with (68) 74 (80) 86 (92) sts for each part.

Work **diagram** in rnds until garment meas approx (25) 27 (31-34) 34 (36) cm.

End with 5th pattern rnd, and **at the same time** cast off 5 sts at each side for armholes (= marked st + 2 sts at each side).

Put garment aside and work sleeves.

## Sleeves:

With 3 mm double pointed ndls cast on (36) 39 (39) 42 (45) sts. Join and work 3 ridges in rnds.

Change to 3.5 mm double pointed ndls.

Insert marker on first st on rnd.

Cont **diagram** in rnds and when sleeve meas 5 cm inc 1 st at each side of marker.

Rep inc approx every (3) 2 (2,5-3) 2,5 (2,5) cm until (48) 57 (57) 66 (69) sts on rnd.

Cont until sleeve meas (23) 26 (29-32) 35 (40) cm, or suitable length.

End with 5th pattern rnd, and cast off 5 sts at middle underarm (= marked st + 2 sts at each side).

Put aside and work other sleeve the same.

## Raglan:

Transfer sleeve sts to the circular 3.5 mm garment ndl, placing one sleeve above each armhole cast-off = (214) 244 (256) 286 (304) sts.

Work 6th rnd of diagram, **at the same time** k2tog at each junction = (210) 240 (252) 282 (300) sts, and insert marker on each of these 4 sts.

Work St-st on marked sts further.

Cont **diagram** and dec for raglan at each marker as follows:

Work until 1 st before marker, sl 2 sts (as working k2tog), k1, psso = 8 sts dec.

Rep dec on alt rnds a total of (13) 14 (15) 18 (19) times = (106) 128 (132) 138 (148) sts.

Transfer the (12) 12 (14) 16 (16) middle front sts to spare ndl for neck.

Cut yarn and beg again at neck.

Cont **diagram** back and forth and cast off further 1 st at beg of every row, **at the same time** cont raglan dec (7) 7 (8) 8 (9) times more and until a total of (20) 21 (23) 26 (28) times over sts for the back.

Leave rem sts on ndl for neckband.

## Finishing:

Sew underarm openings.

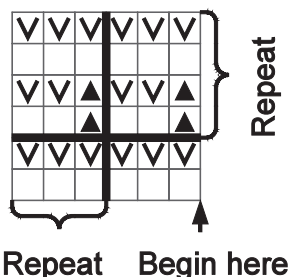
## Neckband:

Transfer sts at neck to 3 mm circular ndl and at the same time knit up sts at neck edge.

Join and work 3 ridges in rnds, **at the same time** adjust number of sts to (84) 86 (88) 90 (92) on first rnd.

Cast off.

- ☐ k on RS, p on WS
- ☒ p on RS, k on WS
- ☒ On RS:  
Sl 1 st with yarn in back of work
- On WS:  
Sl 1 st with yarn in front of work











No 2

SWEATER  
W/FLOUNCES

Design: Mette Harbo

**Sizes:**

(2) 3-4 (5-6) 7-8 (9-10) 12 yrs

**Measurements:**

Chest width: (64) 68 (70) 72 (78) 84 cm

Length: approx (33) 36 (42) 48 (51) 54 cm

Sleeve length: (22) 24 (28) 31 (33) 36 cm, or suitable length

All measurements are for the finished garment = personal body measurements + movement allowance. The measurements are all according to given tension.

**Yarn:**MERINOULL (100 % merino wool,  
50 g = 105 m)**Alternative yarn:**PEER GYNT, SMART, ALPAKKA,  
DUO, MANDARIN MEDI, SPØT

Note: If alternative yarn is chosen be sure to check the yardage on label. The image of garment might change by using alternative yarn

**Yarn required:**

Putty #1015: (5) 6 (7) 8 (9) 10 balls

**Suggested knitting needles:**

Circular and double pointed 3 mm and 3.5 mm

Needle sizes are only suggestions. If your knitting shows tighter tension, use thicker needles, for looser tension use thinner needle.

**Tension:**

21 sts and 34 rnds pattern with 3.5 mm ndls = 10 cm

**Rib-stitch (rib-st):**

K 1 in st on previous rnd/row.

**Pattern worked in rounds:****Rnd 1:** k all sts.**Rnd 2:** p all sts.**Rnd 3:** \*1 yo, sl 1, 1 **rib-st**\*, rep from \*-\* in the rnd.**Rnd 4:** \*p tog the loose st and yo, k1\*, rep from \*-\* in the rnd.

Rep rnd 1 - 4.

**Pattern worked back and forth:****Row 1:** k all sts**Row 2:** (= WS) k all sts**Row 3:** \*1 yo, sl 1, 1 **rib-st**\*, rep from \*-\* in the row.**Row 4:** \*k tog the loose st and yo, p1\*, rep from \*-\* in the row.**Back and front:**

With 3 mm circular ndl cast on (142) 150 (154) 160 (172) 184 sts. Join and work 5 rounds ribbing k1, p1.

Change to 3.5 mm circular ndl, k 1 rnd, **while** dec 8 sts evenly spaced = (134) 142 (146) 152 (164) 176 sts.

Insert marker at sides with (67) 71 (73) 76 (82) 88 sts for each part.

Cont **pattern** until garment meas (20) 22 (26) 30 (32) 34 cm, end with 2nd or 4th pattern rnd, **at the same time** cast off 8 sts at each side for armholes (= 4 sts at each side of markers).

Put garment aside and work sleeves.

**Sleeves:**

With 3 mm double pointed ndls cast on (32) 34 (36) 38 (40) 42 sts. Join and work 4 rounds ribbing k1, p1.

Change to 3.5 mm double pointed ndls, k 1 rnd, **while** inc evenly spaced (11) 13 (13) 15 (19) 19 sts = (43) 47 (49) 53 (59) 61 sts.Insert marker at each side of the 3 middle sts on sleeve. P 1 st before and after these 3 sts further. Work rem sts and the 3 sts in **pattern** as explained. (The flounce is knitted in the p sts later and explained in finishing section).

Insert marker on first and last st on rnd (= underarm).

Cont until sleeve meas (10) 12 (14) 14 (16) 16 cm. Inc 1 st at each side of underarm marker

Rep inc every (4) 4 (3) 3 (3) 3 cm until (49) 53 (59) 65 (69) 73 sts.

Cont until sleeve meas (22) 24 (28) 31 (33) 36 cm, or suitable length, end with the same pattern rnd as back and front, **at the same time** cast off 8 middle underarm sts.

Put aside and work other sleeve the same.

**Raglan:**

Transfer sleeve sts to the circular 3.5 mm garment ndl, placing one sleeve above each armhole cast-off = (200) 216 (232) 250 (270) 290 sts. Insert marker at each junction.

Work in the same order as before (pattern on back, front and sleeve **and with** 1 p st at each side of 3 middle sts on sleeve for flounces).

Dec for raglan as follows: k2tog tbl before each marker, and k2tog after each marker = 8 sts dec.

Rep raglan dec on alt rnds a total of (13) 15 (17) 18 (20) 22 times = (96) 96 (96) 106 (110) 114 sts.

Cast off the (9) 11 (11) 12 (12) 14 middle front sts for neck, cont to end of rnd, cut yarn and beg again at neck.

Read following chapter before knitting further:

Work **pattern** back and forth, and be sure to work raglan dec and 1<sup>st</sup> and 3<sup>rd</sup> pattern row on RS of work.Dec for raglan 3 times more, **at the same time** cast off for neck at beg of every row 3 sts once, 2 sts once, 1 st once = 6 sts dec at each side.

Leave sts on ndl for neck.

**Finishing:**

Sew underarm openings.

**Neckband:**Transfer sts at neck to 3 mm double pointed ndls and knit up sts at neck edge. Join and k 1 rnd **while** adjusting number of sts to (84) 88 (92) 96 (100) 104.

Work (2) 2½ (2½) 2½ (3) 3 cm ribbing k1, p1 in rnds.

Cast off loosely rib-wise.

**Flounce towards the back, right side:**

The RS of St-st for flounce should face the 3 middle sts on sleeve, WS should face the back of sweater. Work as follows:

With 3.5 mm circular ndl knit up 1 st every p st from shoulder to sleeve ribbing. Number of sts a multiple of 5+3.

Work 4 rows St-st, p first row from WS, **at the same time** inc as follows:

\*p3, inc 1, p2, inc 1 \*, rep from \*-\*, end with p3.

From WS cast off k-wise.

**Flounce towards front:**

Work in the same manner, but beg after ribbing on sleeve.

Work in the same manner on other side.











No 3

## WEAVE HAT

*Hat in weave pattern**Instruction: Anita Brathetland***Sizes:**

(2) 4 (6-8) 10-12 yrs

**Yarn:**MERINOULL (100 % merino wool,  
50 g = 105 m)**Alternative yarn:**PEER, GYNT, SMART, ALPAKKA,  
DUO, MANDARIN MEDI, SPØTNote: If alternative yarn is chosen be sure to  
check the yardage on label. The image of  
garment might change by using alternative yarn**Yarn required:**

Burnt amber #2544: 2 balls all sizes

Petroleum #7572: 1 ball all sizes

**Suggested knitting needles:**

Circular and double pointed 3.5 mm

Circular 3 mm

Needle sizes are only suggestions. If your  
knitting shows tighter tension, use thicker  
needles, for looser tension use thinner needle.**Tension:**22 sts x 38 rnds diagram with 3.5 mm  
ndls = 10 x 10 cm**1 ridge worked in rnd:**

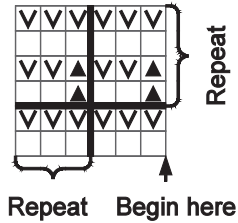
K 1 rnd, p 1 rnd

With burnt amber and 3 mm circular  
ndl cast on (81) 90 (99) 108 sts. Join  
and work 3 rounds ridges.

Change to 3.5 mm circular ndl.

Cont **diagram** in rnds until work meas  
approx (13) 14 (15) 16 cm, end with  
6<sup>th</sup> pattern rnd.Insert marker on first st, and on every  
9th st of rnd = (9) 10 (11) 12 markers.  
K marked sts further.

Dec at each marker as follows:

Work until 1 st before marker, sl 2 (as  
working k2tog), k1, pssso = (18) 20  
(22) 24 sts dec.Rep dec every 8th rnd until (9) 10 (11)  
12 sts rem.Cut yarn, pass through sts, gather  
and fasten well.With petroleum make a pompom and  
fasten at top.

- ☐ k  
☒ p  
☒ sl 1 st with yarn  
 in back of work











No 4

CLOVER  
CARDIGAN

Cardigan w/clover pattern and round yoke

Instruction: Åsa Christiansen

**Sizes:**

(2-4) 6-8 (10-12) yrs

**Measurements:**

Chest width: (65) 76 (87) cm

Length: approx (36-40) 44-49 (50-52) cm

Sleeve length: approx (23-27) 30-34 (38-40) cm, or suitable length

All measurements are for the finished garment = personal body measurements + movement allowance. The measurements are all according to given tension.

**Yarn:**MERINOULL (100 % merino wool,  
50 g = 105 m)**Alternative yarn:**PEER GYNT, SMART, ALPAKKA,  
DUO, MANDARIN MEDI, SPØT

Note: If alternative yarn is chosen be sure to check the yardage on label. The image of garment might change by using alternative yarn

**Yarn required:**Grey melange #1042: (7) 8 (9) balls  
Burnt amber #2544: 1 ball or  
remnants for cord and pompoms**Notions:**

(7) 8 (9) buttons

**Suggested knitting needles:**

Circular and double pointed 3 mm and 3.5 mm

Needle sizes are only suggestions. If your knitting shows tighter tension, use thicker needles, for looser tension use thinner needle.

**Tension:**

22 sts St-st with 3.5 mm ndls = 10 cm

**Rib-stitch (rib-st):**

K 1 in stitch on previous row/rnd

**Edge st: k every row****Rib pattern:****Row 1:** (= WS) 1 edge st, \*p1, k1 \*, rep from \*-\* in the row, end with p1, 1 edge st.**Row 2:** 1 edge st, \*1 rib-st, p1 \*, rep from \*-\* in the row, end with 1 rib-st, 1 edge st.**Back and front:**

With 3 mm circular ndl cast on (155) 181 (207) sts and work 2 cm ribbing back and forth as follows: (1st row = WS) 1 edge st, p1, \*k1, p1 \*, rep from \*-\*, end with 1 edge st.

Change to 3.5 mm circular ndl, k 1 row, **while** dec (14) 16 (18) sts evenly spaced = (141) 165 (189) sts.

Insert marker at sides with (37) 43 (49) sts each front and (67) 79 (91) sts for the back.

Work diagram **A** inside 1 edge st at each side until garment meas approx (23-27) 30-34 (34-35) cm.End with a full or half diagram, **at the same time** cast off 12 sts at each side for armholes (= 6 sts at each side of markers).

Put garment aside and work sleeves.

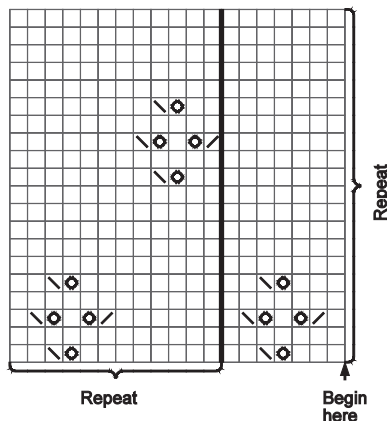
**Sleeves:**

With 3 mm double pointed ndls cast on (32) 36 (36) sts. Join and work 2 cm ribbing k1, p1 in rnds.

Change to 3.5 mm double pointed ndls, k 1 rnd, **while** inc (28) 36 (36) sts evenly spaced = (60) 72 (72) sts.Cont diagram **A** until sleeve meas (23-27) 30-34 (38-40) cm. End with a full or half diagram.

Cast off 12 middle underarm sts for armhole.

Put aside and work other sleeve the same.



□ k on RS, p on WS

⊗ 1 yo

⊘ k2tog

⊞ k2tog tbl

**Yoke:**

Transfer sleeve sts to the circular 3.5 mm garment ndl, placing one sleeve above each armhole cast off = (213) 261 (285) sts.

Change to 3 mm double pointed ndls, Work 3 rows St-st, **at the same time** dec on last row from RS as follows: 1 edge st, k1, \*k2tog, k4\*, rep from \*-\* in the row, end with 1 edge st = (178) 218 (238) sts.Work (14-16) 18-18 (20-20) rows **rib pattern**.Work 2 rows St-st, **at the same time** dec on 2nd row as follows: 1 edge st, k1, \*k2tog, k3\*, rep from \*-\* in the row end with 1 edge st = (143) 175 (191) sts.Work (12-14) 14-16 (16-18) rows **rib pattern**.Work 2 rnds St-st, **at the same time** dec on 2nd row as follows: 1 edge st, k1, \*k2tog, k2\*, rep from \*-\* in the row, end with 1 edge st = (108) 132 (144) sts.Work (10-10) 12-14 (14-16) rows **rib pattern**.Work 2 rnds St-st, **at the same time** dec on 2nd row as follows: 1 edge st, k1, \*k2tog, k1\*, rep from \*-\* in the row, end with 1 edge st = (73) 89 (97) sts.**Neckband:**

Work 2 cm ribbing as follows: (1st row = WS) 1 edge st, p1, \*k1, p1 \*, rep from \*-\*, end with 1 edge st, at the same time after 1 cm work eyelet row in this manner: \*k2tog, 1 yo\*, rep \*-\*.

**Finishing:**

Sew underarm openings.

**Front bands:**

Left front girl/right front boy.

With 3 mm circular ndl knit up approx. 1 st every st/row, but skip every 4<sup>th</sup> st/row, but at rib st section knit up 1 st every 2<sup>nd</sup> st/row to approx. (103-111) 119-127 (129-133) sts on row.

Work 2 cm ribbing as neckband.

Cast off rib-wise.

Work other front band in the same manner but with (7) 8 (9) buttonholes evenly spaced.

The upper and lower approx 1 cm from edges.

**Buttonhole:** k2tog, 1 yo.

Cast off rib-wise.

Sew on buttons.

In burnt amber twist cord at suitable length and pass through eyelets. Also make 2 pompoms and fasten one to each end of cord.











No 5

SWEATER IN  
STRUCTURAL  
PATTERN

Raglan sweater w/structural pattern  
Instruction: Anita Brathetland

**Sizes:**

(2) 4 (6) 8 (10) 12 yrs

**Measurements:**

Chest width: (68) 72 (75) 80 (83) 88 cm

Length: approx (38) 42 (46) 50 (52) 54 cm

Sleeve length: (23) 26 (29) 32 (35) 40 cm, or suitable length

All measurements are for the finished garment = personal body measurements + movement allowance. The measurements are all according to given tension.

**Yarn:**

MERINOULL (100 % merino wool,  
50 g = 105 m)

**Alternative yarn:**

PEER GYNT, SMART, ALPAKKA,  
DUO, MANDARIN MEDI, SPØT

Note: If alternative yarn is chosen be sure to check the yardage on label. The image of garment might change by using alternative yarn

**Yarn required:**

Burnt auburn #2544: (6) 7 (8) 9 (10) 11 balls

**Suggested knitting needles:**

Circular and double pointed 3 mm and 3.5 mm

Needle sizes are only suggestions. If your knitting shows tighter tension, use thicker needles, for looser tension use thinner needle.

**Tension:**

24 sts pattern with 3.5 mm ndls = 10 cm

**Back and front:**

With 3 mm circular ndl cast on (164) 172 (180) 192 (200) 212 sts. Join and work (3) 3 (3) 4 (4) 4 cm ribbing k1, p1 in rnds.

Change to 3.5 mm circular ndl.

Insert marker on 1 st at each side with (83) 87 (91) 95 (99) 107 sts for front and (79) 83 (87) 95 (99) 103 sts for the back.

Cont **diagram** until work meas (24) 27 (29) 32 (33) 34 cm.

End with 5th pattern rnd in diagram, **at the same time** cast off 7 sts at each side for armholes (= marked st + 3 sts at each side of markers). Put aside and work sleeves.

**Sleeves:**

With 3 mm double pointed ndls cast on (34) 38 (40) 42 (44) 46 sts. Join and work (3) 3 (3) 4 (4) 4 cm cm ribbing k1, p1 in rnds.

Change to 3.5 mm double pointed, k 1 rnd, **while** adjusting number of sts to (36) 40 (40) 44 (44) 48.

Insert marker on first st of rnd.

Cont **diagram**, and when sleeve meas 5 cm, inc 1 st at each side of marker.

Rep inc every (1,5) 2 (2) 2 (2) 2,5 cm until (56) 60 (64) 68 (72) 76 sts on rnd.

Cont until sleeve meas (23) 26 (29) 32 (35) 40 cm, or suitable length.

End with the same pattern rnd as back and front, and cast off 7 middle underarm sts (= marked st + 3 sts at each side).

Put aside and work other sleeve the same.

**Raglan:**

Transfer sleeve sts to the circular 3.5 mm garment ndl, placing one sleeve above each armhole cast-off = (248) 264 (280) 300 (316) 336 sts.

Work 1 rnd **diagram**, **at the same time** k2tog at each junction = (244) 260 (276) 296 (312) 332 sts.

Insert marker on each st = 4 markers, and work St-st further on these sts.

Cont **diagram** and dec for raglan at each marker as follows:

Work until 1 st before marker, sl 2 (as working k2tog), k1, psso = 8 sts dec.

Rep dec on alt rnds (11) 13 (13) 15 (17) 17 times = (156) 156 (172) 176 (176) 196 sts.

Transfer the (11) 11 (13) 13 (13) 15 middle front sts to spare ndl for neck.

Cut yarn and beg again at neck.

Cont **diagram** back and forth and cast off 2 sts at beg of every row, **while** continue dec for raglan where it is possible (8) 8 (9) 9 (9) 10 times more, and a total of (19) 21 (22) 24 (26) 27 times over sts for the back.

**NOTE:** Work raglan dec on RS-rows. Leave rem sts on ndl for neckband.

**Finishing:**

Sew underarm openings.

**Neckband:**

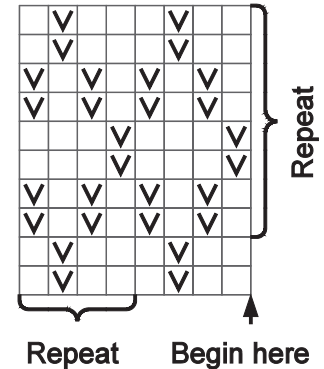
Transfer sts at neck to 3 mm circular ndl, and knit up sts at neck edge.

K 1 rnd **while** adjusting number of sts to (92) 96 (100) 104 (108) 112.

Work 6 cm ribbing k1, p1 in rnds.

Cast off rib-wise.

Fold neckband double to WS and sew loosely.



□ k on RS, p on WS  
 ▽ p on RS, k on WS











No 6

# COLOR-FUN SWEATER

*Raglan sweater**Design: Mette Harbo***Sizes:**

(2) 3-4 (5-6) 7-8 (10) yrs

**Measurements:**

Chest width: (61) 65 (66) 69 (75) cm

Length: approx (35) 37 (43) 50 (54) cm

Sleeve length: (21) 23 (27) 32 (34) cm, or suitable length

All measurements are for the finished garment = personal body measurements + movement allowance. The measurements are all according to given tension.

**Yarn:**

MERINOULL (100 % merino wool, 50 g = 105 m)

**Alternative yarn:**

PEER GYNT, SMART, ALPAKKA, DUO, MANDARIN MEDI, SPØT

Note: If alternative yarn is chosen be sure to check the yardage on label. The image of garment might change by using alternative yarn

**Yarn required:**

Main color

Sand #2431: (3) 4 (5) 5 (6) balls

Color 1

White #1002: 1 ball all sizes

Color 2

Corn yellow #2015: 1 ball all sizes

Color 3

Honey #2325: 1 ball all sizes

Color 4

Burnt amber #2544: 1 ball all sizes

Color 5

Autumn #3062: 1 ball all sizes

Color 6

Med.brown #3161: 1 ball all sizes

**Suggested knitting needles:**

Circular and double pointed 3 mm and 3.5 mm

Needle sizes are only suggestions. If your knitting shows tighter tension, use thicker needles, for looser tension use thinner needle.

**Tension:**

22 sts St-st with 3.5 mm ndls = 10 cm

**Back and front:**

With main color and 3 mm circular ndl cast on (134) 142 (146) 152 (164) sts. Join and work (4) 4 (5) 5 (5) cm ribbing k1, p1 in rounds.

Insert marker at sides with (67) 71 (73) 76 (82) sts for each part.

Change to 3.5 mm circular ndl and cont St-st in rnds until garment meas (22) 24 (28) 33 (36) cm.

Cast off 8 sts at each side for armholes (= 4 sts at each side of markers).

Put garment aside and work sleeves.

**Sleeves:**

With main color and 3 mm double pointed ndls cast on (36) 38 (40) 42 (44) sts. Join and work 4 cm ribbing k1, p1 in rounds.

Change to 3.5 mm double pointed ndls, k 1 rnd, **while** inc 6 sts evenly spaced = (42) 44 (46) 48 (50) sts.

Insert marker on first and last st.

Cont St-st and when sleeve meas 3 cm inc 1 st at each side of marker.

Rep inc every (3,5) 4 (4) 3,5 (3) cm until (50) 52 (56) 62 (66) sts.

Cont until (21) 23 (27) 32 (34) cm, or suitable length.

Cast off 8 middle underarm sts.

Put aside and work other sleeve the same.

**Raglan:**

Transfer sleeve sts to the circular 3,5 mm garment ndl, placing one sleeve above each armhole cast-off = (202) 214 (226) 244 (264) sts.

Insert marker at each junction.

Cont **pattern** as described, **at the same time** dec for raglan on alt rnds as follows:

Work until 3 sts before each marker, p2tog, p2, p2tog after each marker = 8 sts dec.

**Pattern:**

Color 1: p 4 rnds.

Change to color 2 and p 4 rnds.

Cont in the same manner with color 3, 4, 5 and 6.

Change to main color, cont St-st and dec for raglan as follows:

Work until 3 sts rem before each marker, k2tog tbl, k2 and k2tog after marker = 8 sts dec.

Rep dec (13) 14 (15) 16 (17) times = (98) 102 (106) 116 (128) sts.

Cast off the (9) 11 (13) 14 (14) middle sts on front for neck, cont to end of rnd, cut yarn and beg again at neck.

Cont St-st back and forth and rep dec 3 times more, **at the same time** cast off on each side of neck at beg of every row 3 sts once, 2 sts once, 1 st once = 6 sts cast off at each side. Leave sts on ndl for neckband.**Finishing:**

Sew underarm opening.

**Neckband:**Transfer neck sts to 3 mm double pointed ndls, and with main color knit up 1 st every st at neck edge. K 1 rnd, **while** adjusting number of sts to (84) 88 (92) 96 (100).

Work (2) 2 (2) 3 (3) cm ribbing k1, p1 in rnds.

Cast off suitably firm rib-wise.

# COLOR-FUN HAT

*Design: Mette Harbo***Sizes:**

(2-4) 5-6 (7-10) yrs

**Measurements:**

Circumference: (46) 52 (57) cm

Length: (18) 20 (22) cm

**Yarn:**

MERINOULL (100 % merino wool, 50 g = 105 m)

**Alternative yarn:**

PEER GYNT, SMART, ALPAKKA, DUO, MANDARIN MEDI, SPØT

Note: If alternative yarn is chosen be sure to check the yardage on label. The image of garment might change by using alternative yarn

**Yarn required:**

Main color

Sand #2431: 1 ball

Color 1

White #1002: 1 ball or remnants

Color 2

Corn yellow #2015: 1 ball or remnants

Color 3

Honey #2325: 1 ball or remnants

Color 4

Burnt auburn #2544: 1 ball or remnants

Color 5

Autumn #3062: 1 ball or remnants

Color 6

Med.brown #3161: 1 ball or remnants

**Suggested knitting needles:**











No 7

## DRESS

*Dress w/collar worked from neck down**Instruction: Olaug Beate Bjelland***Sizes:**

(1) 2 (4) 6-8 yrs

**Measurements:**

Chest width: (54) 60 (66) 72 cm

Hem width: (108) 120 (132) 138 cm

Length: (42) 46 (52) 56-60 cm, or suitable length

Sleeve length: (23) 26 (30) 32-36 cm, or suitable length

All measurements are for the finished garment = personal body measurements + movement allowance. The measurements are all according to given tension.

**Yarn:**MERINOULL (100 % merino wool,  
50 g = 105 m)**Alternative yarn:**PEER GYNT, SMART, ALPAKKA,  
DUO, MANDARIN MEDI, SPØT

Note: If alternative yarn is chosen be sure to check the yardage on label. The image of garment might change by using alternative yarn

**Yarn required:**

Heather #4622: (7) 8 (9) 10 balls

**Notions:**

2 buttons

**Suggested knitting needles:**Circular and double pointed 3.5 mm  
and 4 mm

Crochet hook 3.5 mm

Needle sizes are only suggestions. If your knitting shows tighter tension, use thicker needles, for looser tension use thinner needle.

**Tension:**

20 sts St-st with 4 mm ndls = 10 cm

**Inc 1 st:**

Pick up yarn between 2 sts and k tbl this new st

**Edge st: k every row****Dress:**

Beg at neck.

With 3.5 mm circular ndl cast on (54) 60 (66) 72 sts, and k 5 rows back and forth = 3 ridges (1<sup>st</sup> row = WS).

Change to 4 mm circular ndl, work with 1 edge st at each side and cont in this manner:

Work 2 rows St-st, inc as follows on next row:

1 edge st, k1, inc 1, \*k3, inc 1\*, rep from \*-\*, end with 1 edge st = (72) 80 (88) 96 sts.

Work extra height at back with «German short rows» as follows:

Work (26) 32 (34) 36 sts, turn, sl first st p-wise, lead yarn over right ndl, pull firmly at the back until 2 loops on right ndl, work to end of row.

Work 1 row over all sts, and work loops tog.

Work in the same manner on other side.

Inc from RS as follows:

Work 1 edge st, k1, inc 1, \*k4, inc 1\*, rep from \*-\*, end with 1 edge st, k1 = (90) 100 (110) 120 sts.

Work (3) 3 (5) 5 rows St-st.

K 1 row and inc as follows:

1 edge st, inc 1, \*k2, inc 1\*, rep from \*-\*, end with 1 edge st = (135) 150 (165) 180 sts.

Join and cont in rnds as follows:

Work (5) 7 (7) 7 rnds St-st.

Next rnd: Inc as follows:

1 edge st, k1, inc 1, \*k5, inc 1\*, rep from \*-\*, end with 1 edge st, k2 = (162) 180 (198) 216 sts.

Work 8 rnds St-st, **at the same time** inc on last rnd (14) 12 (10) 8 sts evenly spaced = (176) 192 (208) 224 sts.

Work (8) 10 (12) 14 rnds St-st, then divide work as follows:

Beg at center back and work (25) 27 (30) 32 sts, transfer the following (39) 43 (45) 49 sts to spare ndl for sleeve, cast on (5) 7 (7) 9 new sts, work (49) 53 (59) 63 sts, transfer the following (39) 43 (45) 49 sts to spare ndl for sleeve, cast on (5) 7 (7) 9 new sts, work the last (24) 26 (29) 31 sts.

**Back and front:**

= (108) 120 (132) 144 sts.

Insert marker on center st of the (5) 7 (7) 9 new sts at each side. Rnd beg at marker at one side.

Insert marker on 4 more sts, with (17) 19 (21) 23 sts between each marker = 6 identical sections.

Cont St-st in rnds and when work meas 3 cm from dividing rnd, inc 1 st at each side of marked sts = 12 sts inc.

Rep inc every (3) 3 (3,5) 3,5 cm (8) 9 (10) 10 times more = (216) 240 (264) 276 sts.

Cont until dress meas (40) 44 (50) 54-58 cm from shoulder, or 2 cm before suitable length.

Work alternately k 1 rnd, p 1 rnd for 8 rnds = 4 ridges.

Cast off loosely k-wise.

**Sleeves:**

Transfer sleeve sts to 4 mm double pointed ndls, and knit up 1 new st in each of the (5) 7 (7) 9 new sts at underarm = (44) 50 (52) 58 sts.

Insert marker on the middle st = marked st. Rnd beg here

Work St-st in rnds until sleeve meas 2 cm.

Dec 1 st at each side of marker as follows:

Work until 1 st before marked st, sl 2 (as working k2tog), k1, pssso.

Rep dec every (4,5) 4 (5) 4-4,5 cm until (36) 40 (42) 44 sts rem.

Cont until sleeve meas (21) 24 (28) 30-34 cm, or 2 cm before suitable length.

Cast off 6 sts evenly spaced = (30) 34 (36) 38 sts on rnd.

Change to 3.5 mm double pointed ndls and work 8 rnds alternately k1 rnd, p1 rnd = 4 ridges.

Cast off loosely k-wise.

Work other sleeve the same

**Finishing:**

With 3.5 mm crochet hook work 1 row sc at slit edge and 2 buttonloops, each with ch4. The lower approx 2 cm from end of slit, the upper at center of neck edging.

Sew buttons on.

## COLLAR

*Instruction: Olaug Beate Bjelland***Sizes:**

(1) 2 (4) 6-8 yrs

**Measurements:**

Approx 8 cm wide, all sizes

Length/neckwidth: approx (27) 30 (33) 36 cm

From RS and 4 mm circular ndl knit up 1 st in every st on 3rd ridge at neck = (54) 60 (66) 72 sts.

P first row = WS.

Inc as follows on next row:

Work \*k1, inc 1 st\*, rep from \*-\*, end with k1 = (107) 119 (131) 143 sts.

Work 2 rows St-st.



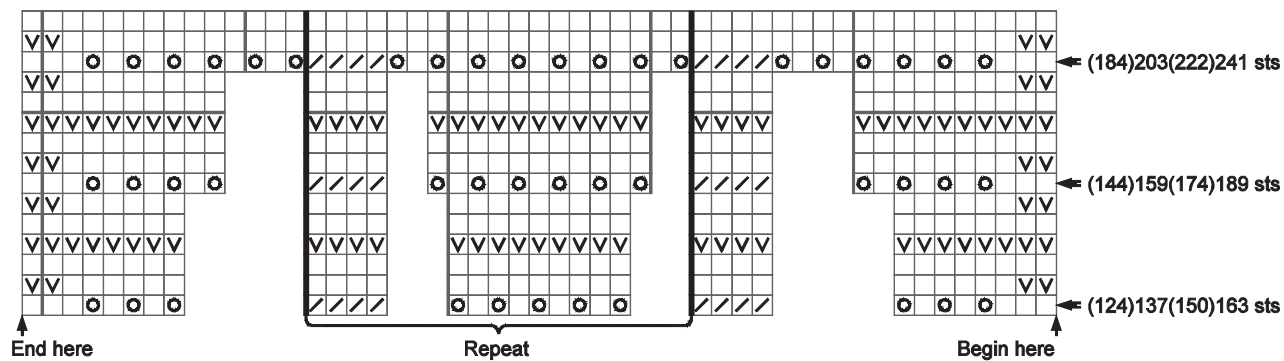
From WS k 1 row (= 1 ridge), **while**  
adjusting number of sts to (114) 126  
(138) 150.

Work 2 rows St-st.

Work **diagram**, edge sts are marked  
in diagram, and inc as shown in  
diagram = (184) 203 (222) 241 sts.

End with k 5 rows (= 3 ridges).

Cast off loosely using thicker ndls.



- ☐ k on RS, p on WS
- ☒ p on RS, k on WS
- ☒ 1 yo
- ☒ k2tog



