



SANDNES GARN

iiS WOODLING

SKOGAFJELL VEST

DESIGN: SIV ELISE SELAND IIS OF NORWAY / INSTRUCTION: OLAUG KLEPPE

SIZES

(XS) S (M) L (XL) XXL

MEASUREMENTS

Bust: (85) 92 (100) 108 (115) 123 cm

Length: (52) 53 (54) 56 (57) 58 cm

All measurements are for the finished garment = personal body measurements + movement allowance. The measurements are all according to given tension.

YARN

FRITIDSGARN (100 % Norwegian wool. 50 g = 70 m)

YARN REQUIRED

Powder pink #3511: (3) 4 (4) 5 (5) 6 balls

Golden brown #2564: (1) 1 (1) 1 (2) 2 balls

Lt. grey melange #1021: (2) 2 (2) 3 (3) 3 balls

Ochre #2035: (1) 1 (1) 2 (2) 2 balls

SUGGESTED KNITTING NEEDLES

Circular 6 mm and 7 mm

Needle sizes are only suggestions. If your knitting shows tighter tension, use thicker needles, for looser tension use thinner needles

TENSION

13 sts and 16 rnds St-st with 7 mm ndls = 10 x 10 cm

TIPS

Note:

Ensure relaxed floats on WS to avoid tight tension at pattern sections. Twist yarns on WS for floats more than 7 sts.

Option: Instead of casting off shoulder sts, transfer shoulder sts to spare ndls and graft or knit shoulder seams

BACK AND FRONT

With Lt. grey melange and 6 mm circular ndl cast on (90) 100 (110) 120 (130) 140 sts. Join and work (6) 6 (6½) 6½ (7) 7 cm ribbing k1, p1 in rnds.

K 1 rnd while inc 20 sts evenly spaced (same for all sizes) = (110) 120 (130) 140 (150) 160 sts. Change to powder pink, 7 mm circular ndl and work (2) 3 (3) 3½ (3½) 3½ cm St-st.

Work diagram and beg at arrow for chosen size.

When garment meas (31) 31 (31) 32 (32) 32 cm divide work for back and front as follows: Cast off (0) 1 (0) 1 (0) 1 st, work (55) 59 (65) 69 (75) 79 sts (= front), cast off (0) 1 (0) 1 (0) 1 sts, work (55) 59 (65) 69 (75) 79 sts (= back). Work each side separately.

BACK

= (55) 59 (65) 69 (75) 79 sts.

Cont diagram back and forth. When working with 2 colors let both colors «follow along» to end of row at each side, and at the same time cast off for armhole at beg of every row at each side as follows 3 sts (0) 0 (1) 1 (1) 1 time, 2 sts (2) 2 (1) 2 (2) 3 times, 1 st (2) 3 (3) 3 (3) 2 times = (6) 7 (8) 10 (10) 11 sts cast off at each side and (43) 45 (49) 49 (55) 57 sts rem.

Cont straight up and when diagram is finished cont rem garment in St-st and powder pink.

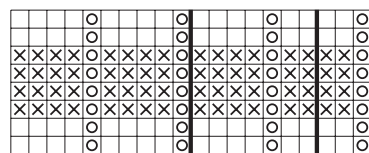
When armhole meas (18) 19 (20) 21 (22) 23 cm, meas straight from dividing at sides, cast off the (15) 17 (19) 19 (19) 19 middle back sts for neck, and work each side separately. Cast off at beg of every row at neck side 3 sts (1) 1 (1) 1 (2) 2 times, (2) 2 (2) 2 (1) 1 times = (7) 7 (8) 8 (10) 11 shoulder sts rem.

Cast off shoulder sts when garment meas (21) 22 (23) 24 (25) 26 cm, meas from dividing at sides.

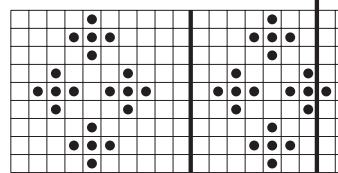
Work other side in the same manner, but in a mirror image.

FRONT

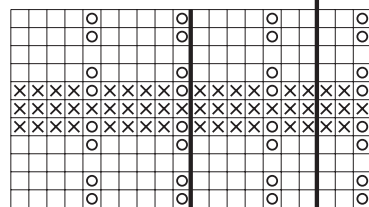
= (55) 59 (65) 69 (75) 79 sts.



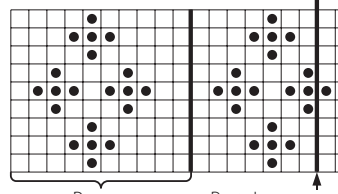
With powder pink work 4 cm St-st (all sizes)



With powder pink work 4 cm St-st (all sizes)



With powder pink work 4 cm St-st (all sizes)



□ Powder pink
● Golden brown
⊗ Lt. grey melange
⊠ Ochre

Repeat

Begin here

(XS) S
(M) L
(XL) XXL

Work and cast off for armholes as the back. When garment meas approx. (14) 15 (16) 17 (17) 18 cm from dividing, cast off the (11) 11 (13) 13 (13) 13 middle front sts for neck. Work each side separately and cast off at beg of every row at neck side 4 sts once for all sizes, 2 sts (2) 2 (2) 2 (1) 1 times, 1 st (1) 2 (2) 2 (2) 2 times. Cont until the same length as the back and cast off shoulder sts.

Work other side in the same manner, but in a mirror image.

FINISHING

Sew shoulder seams.

NECKBAND

Beg at one shoulder seam, and with powder pink and 6 mm ndl knit up approx 7 sts per 5 cm at neck edge.

Number of sts a multiple of 2.

Change to Lt. grey melange, k 1 rnd, then cont ribbing k1, p1 in rnds until band meas a little less than 3 cm.

Cast off rib-wise.

ARMHOLE BANDS

Work in the same manner as neckband, but beg at middle underarm.