



SANDIVES GARDEN

X

iis WOODLING

# BLÅFJELL SWEATER

DESIGN: SIV ELISE SELAND IIS OF NORWAY / INSTRUCTION: OLAUG KLEPPE

## SIZES

(XS) S (M-L) XL (XXL)

## MEASUREMENTS

### Sweater:

Bust: (95) 105 (114) 123 (132) cm

Length: approx (63) 65 (67) 68 (70) cm

Sleeve length: 47 cm, or suitable length

### Cowl:

Length approx 21 cm

All measurements are for the finished garment = personal body measurements + movement allowance. The measurements are all according to given tension.

## YARN

FRITIDSGARN (100 % Norwegian wool.  
50 g = 70 m)

## YARN REQUIRED

### Sweater:

Sea-green melange #7252: (6) 6 (6) 7 (7) balls

Natural melange #2641: (2) 2 (2) 2 (3) balls

Golden brown #2564: (1) 1 (1) 2 (2) balls

Blue-grey #6071: (2) 3 (3) 3 (4) balls

### Cowl:

Blue-grey #6071: 1 ball

## SUGGESTED KNITTING NEEDLES

Circular and double pointed 6 mm and 7 mm  
Needle sizes are only suggestions. If your knitting shows tighter tension, use thicker needles, for looser tension use thinner needles

## TENSION

13 sts and 16 rnds St-st with 7 mm ndls = 10 x 10 cm

## NOTE

Ensure relaxed floats on WS to avoid tight tension at pattern sections. Twist yarns on WS for floats more than over 7 sts.

## SWEATER

### BACK AND FRONT

With sea-green melange and 6 mm circular ndl cast on (104) 116 (128) 140 (152) sts. Join and work 7 cm ribbing k1, p1 in rnds. K 1 rnd, while inc 20 sts evenly spaced = (124) 136 (148) 160 (172) sts. Insert marker at sides with (62) 68 (74) 80 (86) sts each for back and front.

Change to 7 mm circular ndl.

Work diagram **A** in St-st.

Cont St-st until garment meas (28) 28 (27) 27 (27) cm.

Work diagram **B**, beg and end at arrow for chosen size for front and back

Cont until garment meas (43) 43 (42) 42 (42) cm, and cast off for armholes as follows:

Cast off the 5 first sts, work (53) 59 (65) 71 (77) sts (= back), cast off 9 sts, work (53) 59 (65) 71 (77) sts (= front), cast off rem 4 sts. Put garment aside and work sleeves.

## SLEEVES

With blue-green and 6 mm double pointed ndls cast on (30) 32 (34) 36 (36) sts. Join and work 7 cm ribbing k1, p1 in rnds.

Change to 7 mm double pointed ndls

Insert marker around first st on rnd.

Work diagram **C** in St-st.

Cont St-st with blue-grey and on first rnd inc 1 st at each side of marked st.

Rep inc every (3½) 3½ (3) 3 (2½) cm until sleeve meas 24 cm. Change to sea-green melange.

Rep inc until (50) 52 (56) 60 (62) sts on rnd, at the same time when sleeve meas 32 cm, or approx 15 cm before suitable length, work diagram **B**. Count from middle of sleeve to establish beg of pattern.

Cont until sleeve meas approx 47 cm and cast off at underarm on the same pattern rnd as back/front as follows:

Cast off marked sts + 4 sts at each side of this st = 9 sts cast off = (41) 43 (47) 51 (53) sts rem.

Put aside and work other sleeve in the same manner.

## RAGLAN

Transfer sleeve sts to the circular 7 mm garment ndl, placing one sleeve above each armhole cast-off = (188) 204 (224) 244 (260) sts. Insert marker at each junction.

Rnd beg at the junction by sts for the back. Cont diagram **B** in St-st and dec for raglan on second rnd as follows: k2tog after each marker, and k2tog tbl before each marker = 8 sts dec.

Cont dec in this manner on alt rnds. When diagram **B** is finished, work (3) 4 (4) 5 (5) cm St-st with sea-green melange. Work diagram **C**, then cont with blue-grey until a

total of (13) 14 (15) 16 (18) times of dec are finished = (27) 31 (35) 39 (41) sts rem at front. Cast off for neck the (11) 11 (11) 13 (13) middle front sts.

Cont to end of rnd, cut yarn and beg again at front.

Cont back and forth, at the same time cast off for neck at beg of every row at each side 3 sts (0)0(0)1(1) time, 2 sts (2)2(2)1(2) times, 1 st (1)2(3)3(2) times, and dec for raglan (3) 4 (5) 5 (5) times more. Leave rem sts on ndl for neckband.

## FINISHING NECKBAND

With blue-grey and small 6 mm circular ndl k neck sts and knit up sts at neck edge with approx 14 sts per 10 cm.

Number of sts a multiple of 2. Work 3 cm ribbing k1, p1 in rnds.

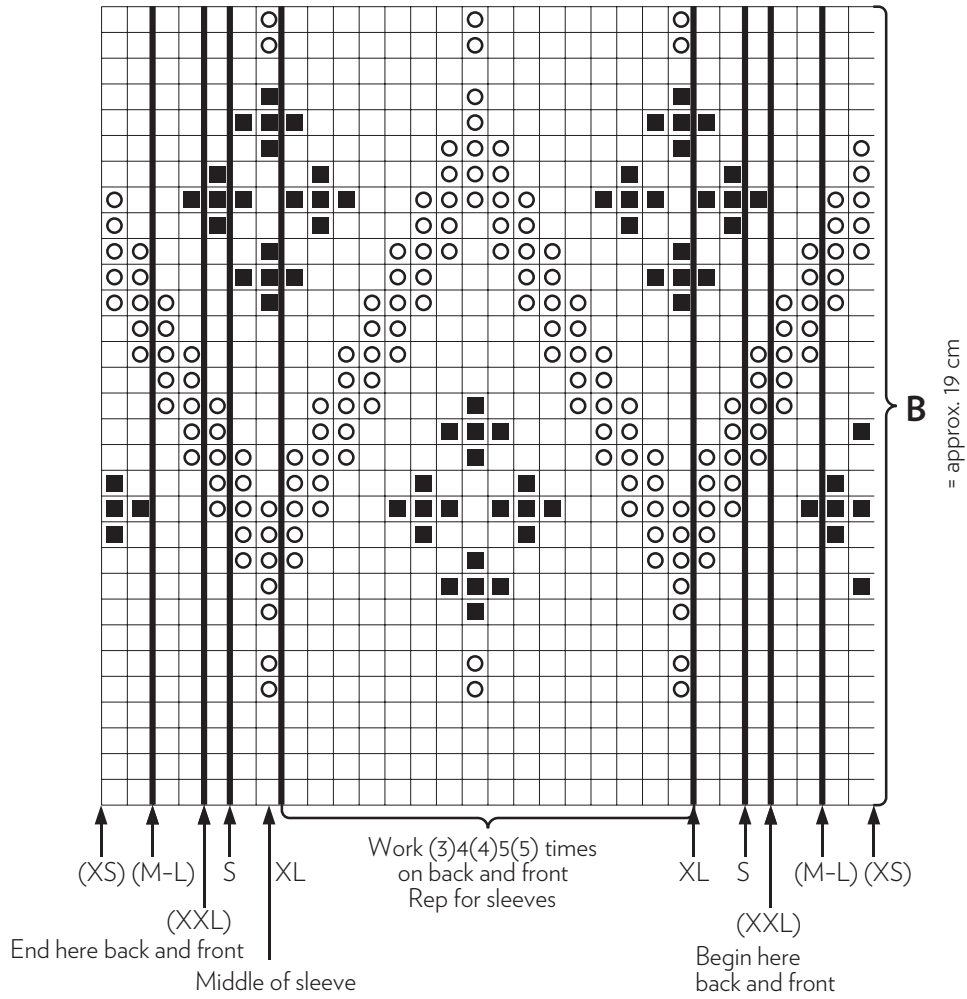
Cast off rib-wise.

Sew tog at underarms.

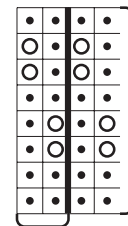
## COWL

With blue-grey and small 7 mm circular ndl cast on 66 sts.

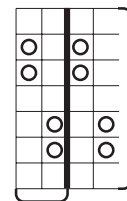
Join and work approx 20 cm ribbing k1, p1 in rnds, but leave enough yarn for cast off. Cast off loosely k-wise.



- Sea-green mélangé
- Natural mélangé
- Golden brown
- Blue-grey



Repeat



Repeat

**C**

**A**



THE NORWEGIAN  
YARN FACTORY  
SINCE 1888