

FELTED SOCKS

SANDNES GARN

THE NORWEGIAN
YARN FACTORY
SINCE 1888

*For kids
and women*

SNOWCRYSTAL
PATTERN



FELTED SNOWCRYSTAL SOCKS

FELTED SOCKS W/SNOWFLAKE PATTERN / INSTRUCTION: OLAUG BEATE BJELLAND



SIZES

(2-4) 6-8 (10-12) yrs, Ladies

YARN

FRITIDSGARN (100 % Norwegian wool, 50 g = 70 m)

YARN REQUIRED

Corn yellow #2015: (2) 2 (3) 3 balls
Natural #1012: 1 ball

SUGGESTED KNITTING NEEDLES

Double pointed 6 mm

Needle sizes are only suggestions. If your knitting shows tighter tension, use thicker needles, for looser tension use thinner needle.

TENSION

14 sts St-st with 6 mm ndls = 10 cm

With corn yellow and 6 mm double pointed ndls cast on loosely (32) 32 (40) 40 sts.
Join and p 1 rnd. Insert marker at beg of rnd = center back.
Work diagram (A) A (B) B, end with 1 p rnd in corn yellow = folding rnd.
Turn work inside out and work (8) 9 (10) 11 cm St-st, while on first rnd adjust number of

sts to (28) 32 (36) 40.

Cut yarn and work heel as follows:

Work (5) 6 (7) 8 cm St-st over the first (7) 8 (9) 10 sts and the last (7) 8 (9) 10 last sts.

Heel dec:

Work until (4) 5 (5) 6 sts rem at one side, turn and work until the same number of sts rem at other side, turn and work until 1 st before previous turning, sl 1, k1, psso.

Turn and work until 1 st rem before turning at other side, p2tog.

Cont dec 1 st at each side in this manner until all side sts are dec.

Pick up (5) 6 (6) 7 sts at each side of heel.

Cont St-st in rnds over all sts, while on first rnd dec 1 st at each side of heel = (28) 32 (36) 40 sts on rnd.

Cont until foot meas (14) 16 (18) 24 cm, including heel.

TOE DEC

Work as follows: *k2tog, k(3) 4 (5) 6, k2tog*, rep from *-* in the rnd = (20) 24 (28) 32 sts.

Work 3 rnds without dec.

k2tog, k(1) 2 (3) 4, k2tog, rep from *-* in the rnd = (12) 16 (20) 24 sts.

Work (2) 3 (3) 3 rnds without dec.

(2-4) 6-8 yrs:

= (12) 16 sts.

Work (k2tog) in the rnd.

Cut yarn, pull through rem (6) 8 sts, gather and fasten well.

(10-12) yrs, Ladies:

= (20) 24 sts.

Work *k2tog, k(1) 2, k2tog*, rep from *-* in the rnd = (12) 16 sts.

Work 2 rnds without dec.

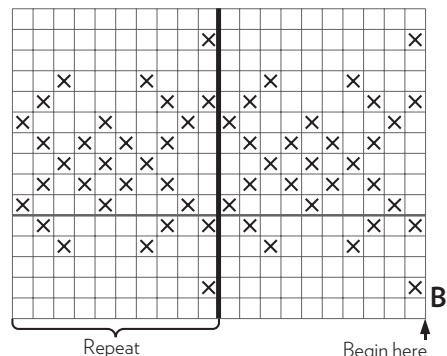
Work (k2tog) in the rnd.

Cut yarn, pull through rem (6) 8 sts, gather and fasten well.

Work other sock in the same manner.

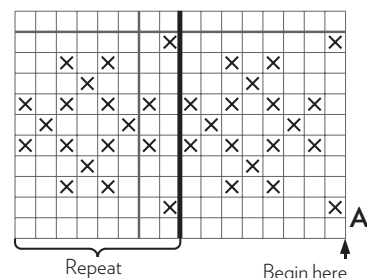
Felt the socks.

Fold snowflake cuff to RS.



Repeat

Begin here
= center back



Repeat

Begin here
= center back

- ☐ Corn yellow
- ☒ Natural