

HELLEJAKKEN

SADNES GARN

THE NORWEGIAN
YARN FACTORY
SINCE 1888



HELE CARDIGAN

WRAP AROUND CARDIGAN W/CABLES AND PATTERN ON SLEEVES / DESIGN: LILL FROSTMANN



SIZES

(XS) S (M) L (XL) XXL

MEASUREMENTS

Bust: approx (86) 91 (98) 106 (116) 123 cm
Length: approx (51) 52 (53) 54 (55) 56 cm
Sleeve length: 47 cm, or suitable length
All measurements are for the finished garment = personal body measurements + movement allowance. The measurements are all according to given tension.

YARN

MINI ALPAKKA (100 % alpaca, 50 g = 150 m)

ALTERNATIVE YARN

MANDARIN PETIT, ALPAKKA SILKE, TYNN MERINOULL, BABYULL LANETT, SISU

Note: If alternative yarn is chosen be sure to check the yardage on label. The image of garment might change by using alternative yarn

YARN REQUIRED

Olive green #9554: (6) 7 (8) 8 (9) 10 balls
Natural #1012: 1 ball all sizes
Petroleum #7572: 1 ball all sizes Grey-beige melange #2650: 1 ball all sizes

SUGGESTED KNITTING NEEDLES

Circular 2.5 mm and 3 mm
Double pointed 3 mm
Crochet hook 2.5 mm
Needle sizes are only suggestions. If your

knitting shows tighter tension, use thicker needles, for looser tension use thinner needle

TENSION

27 sts St-st with 3 mm ndls = 10 cm

EDGE ST: K EVERY ROW

BACK AND FRONT

With olive green and 3 mm circular ndl cast on (236) 248 (268) 288 (316) 336 sts, and work 2 cm ribbing as follows: (first row = WS) 1 edge st, p2, *k2, p2*, rep from *-*, end with 1 edge st.

Cont as follows: 1 edge st, diagram A, work St-st until 15 sts rem, work diagram A, 1 edge st. After first 4 rows in diagram the number of sts on ndl are inc to = (240) 252 (272) 292 (320) 340 sts.

Insert marker at each side with (62) 65 (70) 74 (82) 87 sts for each front and (116) 122 (132) 144 (156) 166 sts for the back.

Cont in this order until garment meas 33 cm all sizes.

Cast off 12 sts at each side for armholes (= 6 sts at each side of markers).

Put garment aside and work sleeves.

SLEEVES

With olive green and 3 mm double pointed ndls cast on (60) 60 (64) 64 (68) 68 sts. Join and work 9 rnds St-st for facing, p 1 rnd (= folding rnd), then work diagram B.

Insert marker around first and last st of rnd. Inc 1 st at each side of marker. Rep inc every (3) 2½ (2½) 2 (2) 1½ cm until (78) 82 (86) 90 (94) 98 sts.

Cont until sleeve meas 47 cm, or suitable length.

Cast off 12 middle underarm sts (= marked st + 5 sts at each side).

Put aside and work other sleeve the same.

RAGLAN

Transfer sleeve sts to the circular 3 mm garment ndl, placing one sleeve above each armhole cast-off = (348) 368 (396) 424 (460) 488 sts.

Insert marker around 2 sts at each junction (1 st from sleeve and 1 st from back/front). Work 3 rows as sts appear. From RS dec for raglan at each marker as follows: Work until 2 sts before marker, sl 1, k1, psso, k2, k2tog = 8 sts dec.

Rep raglan dec on alt rows a total of (17) 19 (21) 23 (25) 27 times = (212) 216 (228) 240

(260) 272 sts, at the same time dec 2 sts over each cable, in the same manner as inc on first row, as shown on last row of diagram.

Transfer the (14) 15 (17) 18 (20) 22 first sts at each side to spare ndl for neck.

Cont raglan dec further 10 times more while cast off for neck at beg of every row 3 sts (0) 0 (0) 0 (3) 4 times, 2 sts (3) 3 (4) 5 (3) 2 times, 1 st (7) 7 (6) 5 (4) 4 times = (74) 76 (82) 90 (98) 104 sts.

Leave sts on ndl for neckband.

FINISHING

Sew underarm openings.

FRONT BAND

With 2.5 mm circular ndl knit up 1 st every st/row, but miss every 4th st/row at front edge to approx (107) 109 (113) 115 (117) 119 sts.

K 7 rows back and forth. Last row = folding row. Work 6 rows St-st for facing.

Cast off suitably firm.

Fold facing and sew loosely on WS.

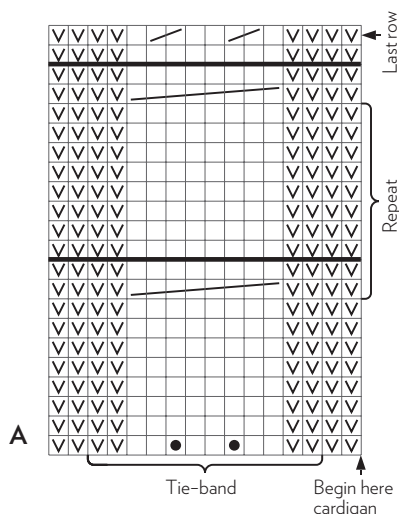
Work other front in the same manner

- ☐ k on RS, p on WS
- ☒ p on RS, k on WS

Transfer 4 sts to extra ndl and hold in front of work, k4, k 4 sts from extra ndl

- ☒ Inc 1 st: pick up yarn between 2 sts and k tbl this new st

k2tog



NECKBAND

Transfer neck sts to 2.5 mm circular ndl and knit up sts over the cast-off sts and front band sts (through both layers) to approx (148) 152 (156) 160 (164) 168 sts. Number of sts a multiple of 4.

Work 10 rows ribbing back and forth as follows: (first row = WS) 1 edge st, p2, *k2, p2*, rep from *-*, end with 1 edge st.


From WS k 1 row for folding row, then work 10 rows ribbing further.

Cast off rib-wise.

Fold facing and sew loosely on WS.

Fold facing on sleeves and sew loosely on WS.

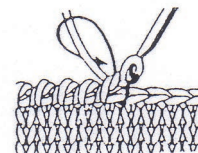
TIE-BAND

With 3 mm ndls cast on 12 sts and work approx 36 cm diagram  inside 1 edge st at each side, inc and dec as shown in diagram. Cast off.

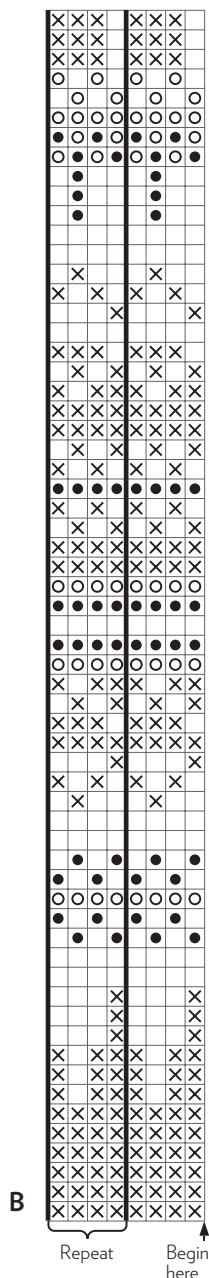
Work one more tie-band in the same manner.





With 2.5 mm crochet hook work 1 rnd crab sts on edges for tie-bands.

Sew one tie-band at left front band side and one at right front band side (see photo).



Crab stitches:
Work sc from left to right



-  Olive green
-  Natural
-  Grey-beige melange
-  Petroleum