



NO 2 ARAN SWEATER

#arangerser

Knitting skill level: *** Medium

Instruction: Åsa Christiansen

Size:

(2) 4 (6) 8 (10) 12 yrs

Measurements:

Chest width: (66) 70 (74) 78 (82) 88 cm

Length: approx (36) 40 (44) 48 (52) 54 cm

Sleeve length: (23) 26 (29) 32 (35) 40 cm,
or suitable length

All measurements are for the finished garment
= personal body measurements + movement
allowance. The measurements are all according to
given tension.

Description:

Work sweater from hem up, with raglan
dec after dividing work at all 4 markers for
raglan. Work each part separately.
Dec for slanting sides on front and back,
and work sleeve cap on each sleeve.
Sew sleeve cap to back and front before
knitting up sts for neckband.

Yarn:

SMART (100 % wool, superwash, 50 g =
100 m)

Alternative yarn:

PEER GYNT, ALPAKKA, DUO, MERINOULL

NOTE: If alternative yarn is chosen be sure to check
the yardage on label. The image of garment might
change by using alternative yarn.

Yarn required:

Sand shell #2125/Lt.sea green #7721: (4)
5 (6) 7 (8) 9 balls

Suggested knitting needles:

Circular and double pointed 3.5 mm and
4 mm

Needle sizes are only suggestions. If your knitting
shows tighter tension, use thicker needles, for looser
tension use thinner needle

Tension:

20 sts St-st with 4 mm ndls = 10 cm

Reverse St-st (rev St-st) =

k on WS, p on RS

Back and front:

With 3.5 mm circular ndl cast on (132)
140 (148) 156 (164) 176 sts. Join and work
(3) 3 (3) 4 (4) 4 cm ribbing k1, p1 in rnds.

Insert marker at each side with (66) 70
(74) 78 (82) 88 sts for each part, and
insert marker around the 46 middle front
and the 46 middle back sts.

Change to 4 mm circular ndl, work rev St-st
and diagram **A** over the marked sts on
front and back until garment meas approx
(23) 25 (29) 31 (34) 34 cm.

Cast off (6) 6 (6) 8 (8) 8 sts for armholes
at each side (= (3) 3 (3) 4 (4) 4 sts at each
side of side markers).

Put garment aside and work sleeves.

Sleeves:

With 3.5 mm double pointed ndls cast on
(32) 34 (36) 38 (40) 42 sts. Join and work
(3) 3 (3) 4 (4) 4 cm ribbing k1, p1 in rnds.

Insert marker around first and last st on
rnd.

Insert marker around the (16) 16 (16) 20
(20) 20 sts at middle of sleeve.

Change to 4 mm double pointed ndls, and
work rev St-st and diagram **(B) B (B) C (C)**
C over the middle marked sts.

When sleeve meas 5 cm inc 1 st on each
side of marker at middle underarm.

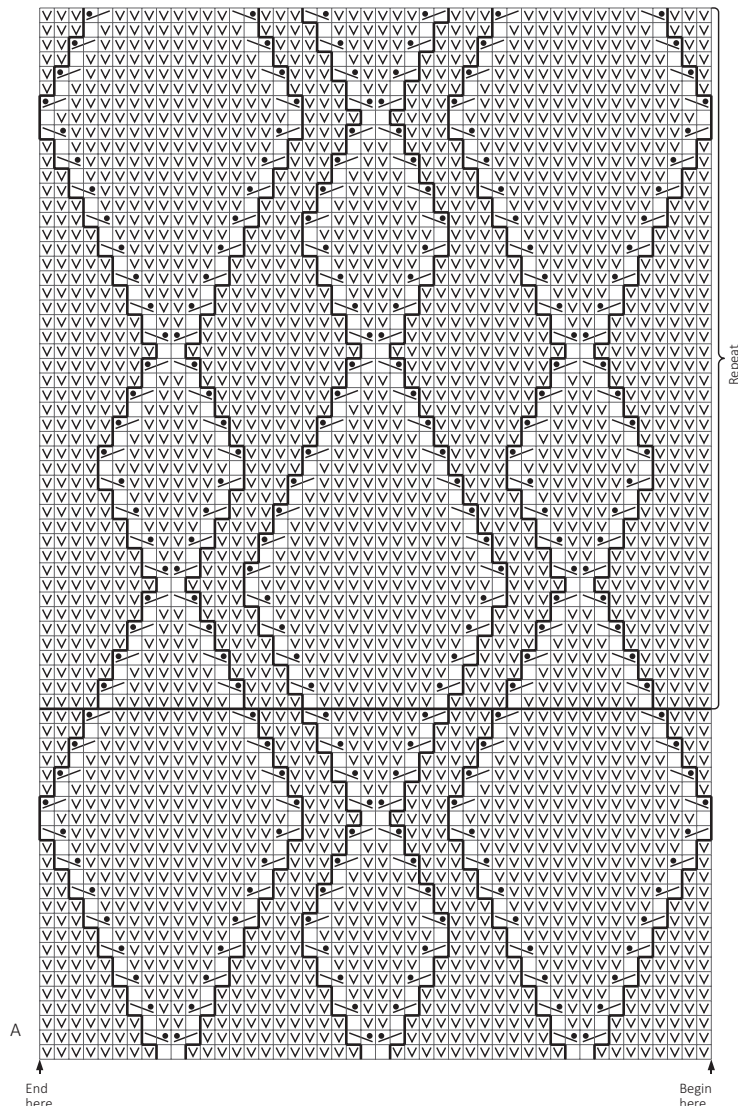
Rep inc approx every 3 cm until (44) 48
(52) 56 (60) 64 sts. Work new sts in rev
St-st as they arise.

k on RS,
p on WS

p on RS,
k on WS

transfer 1 st to extra ndl and hold
in back of work, k1, and
p st on extra ndl

Transfer 1 st to extra ndl and hold
in front of work, p1, and
k st on extra ndl



Cont until sleeve meas approx (23) 26 (29) 32 (35) 40 cm, or suitable length.

Cast off (6) 6 (6) 8 (8) 8 middle underarm sts (= marked sts + (2) 2 (2) 3 (3) 3 sts at each side).

Put aside and work other sleeve in the same manner.

Raglan:

Transfer sleeve sts to the circular 4 mm garment ndl, placing one sleeve above each armhole cast-off = (196) 212 (228) 236 (252) 272 sts.

Insert marker at each junction.

Cont further with rev St-st and **diagram**, and dec for raglan as follows: p2tog before and after each marker = 8 sts dec. Rep raglan dec on alt rnds (8) 10 (12) 11 (13) 15 times = (132) 132 (132) 148 (148) 152 sts.

Transfer the (10) 10 (10) 14 (14) 16 middle front sts for neck to spare ndl. Work to end of rnd, cut yarn and beg again at neck.

Cont back and forth and cast off at neck 2 sts twice at beg of row at each side, **at the same time** cont dec for raglan twice.

Divide work at all 4 raglan dec and work each part separately.

Left front:

= (11) 11 (11) 11 (11) 11 sts.

Cont **diagram** further, **at the same time** cast off at sleeve side 2 sts once, 3 sts 3 times = all sts dec.

Right front:

= (11) 11 (11) 11 (11) 11 sts.

Work as left side, but in a mirror image.

Back:

= (40) 40 (40) 44 (44) 46 sts.

Cont **diagram** further, **at the same time** cast off at each side in the same manner as for fronts.

Transfer (18) 18 (18) 22 (22) 24 sts at neck to spare ndl for neckband.

Edge st: k every row

Sleeve cap:

= (18) 18 (18) 22 (22) 22 sts.

Cont **diagram** further inside 1 edge st at each side until work meas the same as the slanting edges on back and front.

Cast off.

Work other sleeve cap in the same manner.

Finishing:

Sew sleeve cap to back and front.

Sew underarm openings.

Neckband:

Transfer sts at neck to small 3.5 mm circular ndl and knit up sts at neck edge. Work (6) 6 (6) 7 (7) 7 cm ribbing k1, p1 in rnds, at the same time adjust number of sts to (68) 70 (72) 76 (80) 82 on first rnd.

Cast off loosely rib-wise.

Fold neckband to WS and sew loosely with hidden sts.

