



NO 3A

CHILDHOOD SWEATER W/ CREW NECK

#barndomsgensereren

Knitting skill level: *** Medium

Instruction: Åsa Christiansen

Size:

(2) 4 (6) 8 (10) 12 yrs

Measurements:

Chest width: (66) 70 (74) 76 (80) 88 cm

Length: (36) 40 (44) 48 (50) 52 cm

Sleeve length: (23) 26 (29) 32 (35) 40 cm,
or suitable length

All measurements are for the finished garment
= personal body measurements + movement
allowance. The measurements are all according to
given tension.

Description:

Work sweater from hem up, and with
pattern on yoke according to diagram

Yarn:

SMART (100 % wool, superwash,
50 g = 100 m)

Alternative yarn:

PEER GYNT, ALPAKKA, DUO, MERINOULL
NOTE: If alternative yarn is chosen be sure to check
the yardage on label. The image of garment might
change by using alternative yarn.

Yarn required:

Dk.blue #6062: (4) 5 (6) 7 (8) 9 balls
Eucalyptus #8051: 1 ball all sizes
Burnt terracotta #4036: 1 ball all sizes
Sand shell #2125: 1 ball all sizes
Lt.sea green #7721: 1 ball all sizes

Suggested knitting needles:

Circular and double pointed 3.5 mm and
4 mm

Needle sizes are only suggestions. If your knitting
shows tighter tension, use thicker needles, for looser
tension use thinner needle

Tension:

20 sts St-st with 4 mm ndls = 10 cm

Back and front:

With dk.blue and 3.5 mm circular ndl cast
on (132) 140 (148) 152 (160) 176 sts. Join

and work (3) 3 (3) 4 (4) 4 cm ribbing k1,
p1 in rnds.

Change to 4 mm circular ndl, insert
marker around 1 st at each side with (65)
69 (73) 75 (79) 87 sts between markers.
Cont St-st in rnds until garment meas (22)
25 (28) 32 (33) 35 cm.

Cast off 9 sts at each side for armholes (=
marked st + 4 sts at each side).

Put garment aside and work sleeves.

Sleeves:

With dk.blue and 3.5 mm double pointed
ndls cast on (32) 34 (34) 36 (36) 38 sts.

Join and work (3) 3 (3) 4 (4) 4 cm ribbing
k1, p1 in rnds

Insert marker around first st on rnd.

Change to 4 mm double pointed ndls,
cont St-st and inc 1 st at each side of
marker.

Rep inc approx every (2½) 2½ (2½) 2½
(2½) 3 cm until (48) 50 (52) 56 (58) 62 sts.
Cont until sleeve meas approx (23) 26 (29)
32 (35) 40 cm, or suitable length.

Cast off 9 middle underarm sts (= marked
st + 4 sts at each side).

Put aside and work other sleeve in the
same manner.

Round yoke:

Transfer sleeve sts to the circular 4 mm
garment ndl, placing one sleeve above
each armhole cast-off = (192) 204 (216)
228 (240) 264 sts.

Insert marker at each junction.

Rnd beg at a junction on the back.

Work (1) 2 (4) 4 (6) 6 rnds with dk.blue.

Work **diagram** and dec as shown in
diagram = (64) 68 (72) 76 (80) 88 sts.

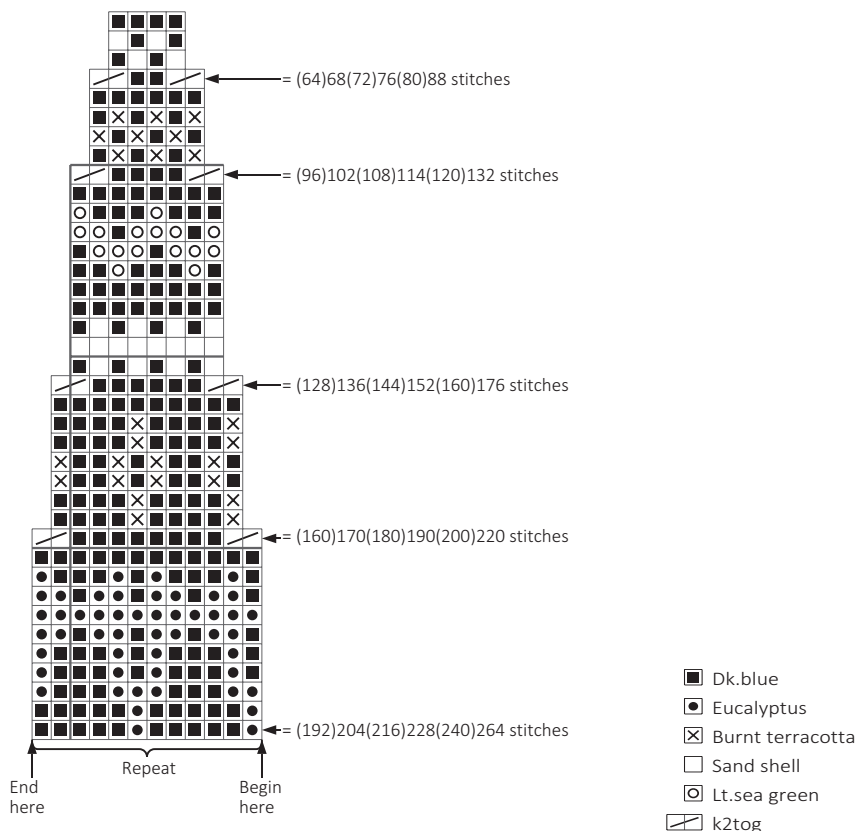
Change to 3.5 mm circular ndl, cont with
dk.blue and work (6) 6 (6) 7 (7) 7 cm
ribbing k1, p1 for neckband.

Cast off loosely rib-wise, using 4 mm ndls.

Finishing:

Sew tog underarm openings.

Fold neckband to WS and sew loosely
with hidden sts.



NO 3B

CHILDHOOD SWEATER W/ TURTLENECK

#barndomsgensereren

Knitting skill level: *** Medium

Instruction: Åsa Christiansen

Size:

(2) 4 (6) 8 (10) 12 yrs

Measurements:

Chest width: (66) 70 (74) 76 (80) 88 cm

Length: (36) 40 (44) 48 (50) 52 cm

Sleeve length: (23) 26 (29) 32 (35) 40 cm,
or suitable length

All measurements are for the finished garment
= personal body measurements + movement
allowance. The measurements are all according to
given tension.

Description:

Work sweater from hem up, and with
pattern on yoke according to diagram

Yarn:

SMART (100 % wool, superwash,
50 g = 100 m)

Alternative yarn:

PEER GYNT, ALPAKKA, DUO, MERINOULL

NOTE: If alternative yarn is chosen be sure to check
the yardage on label. The image of garment might
change by using alternative yarn.

Yarn required:

Sand shell #2125: (4) 5 (6) 7 (8) 9 balls

Burnt terracotta #4036: 1 ball all sizes

Dusty purple #5052: 1 ball all sizes

Eucalyptus #8051: 1 ball all sizes

Old rose #4332: 1 ball all sizes

Suggested knitting needles:

Circular and double pointed 3.5 mm and
4 mm

Needle sizes are only suggestions. If your knitting
shows tighter tension, use thicker needles, for looser
tension use thinner needle

Tension:

20 sts St-st with 4 mm ndl = 10 cm

Back and front:

With sand shell and 3.5 mm circular ndl
cast on (132) 140 (148) 152 (160) 176 sts.
Join and work (3) 3 (3) 4 (4) 4 cm ribbing

k1, p1 in rnds.

Change to 4 mm circular ndl, and insert
marker around 1 st at each side with (65)
69 (73) 75 (79) 87 sts between markers.

Cont St-st in rnds until garment meas (22)
25 (28) 32 (33) 35 cm.

Cast off 9 underarm sts at each side for
armholes (= marked st + 4 sts at each
side).

Put garment aside and work sleeves.

Sleeves:

With sand shell and 3.5 mm double
pointed ndls cast on (32) 34 (34) 36 (36)
38 sts. Join and work (3) 3 (3) 4 (4) 4 cm
ribbing k1, p1 in rnds.

Insert marker around first st on rnd.

Change to 4 mm double pointed ndls.

Cont St-st and inc 1 st at each side of
marker.

Rep inc approx every (2½) 2½ (2½) 2½
(2½) 3 cm until (48) 50 (52) 56 (58) 62 sts
on rnd.

Cont until sleeve meas approx (23) 26 (29)
32 (35) 40 cm, or suitable length.

Cast off 9 middle underarm sts (= marked
st + 4 sts at each side).

Put aside and work other sleeve in the
same manner.

Round yoke:

Transfer sleeve sts to the circular 4 mm
garment ndl, placing one sleeve above
each armhole cast-off = (192) 204 (216)
228 (240) 264 sts.

Insert marker at each junction.

Round beg at a junction on the back

Work (1) 2 (4) 4 (6) 6 rnds St-st with sand
shell.

Work **diagram**, and dec as shown in
diagram = (64) 68 (72) 76 (80) 88 sts.

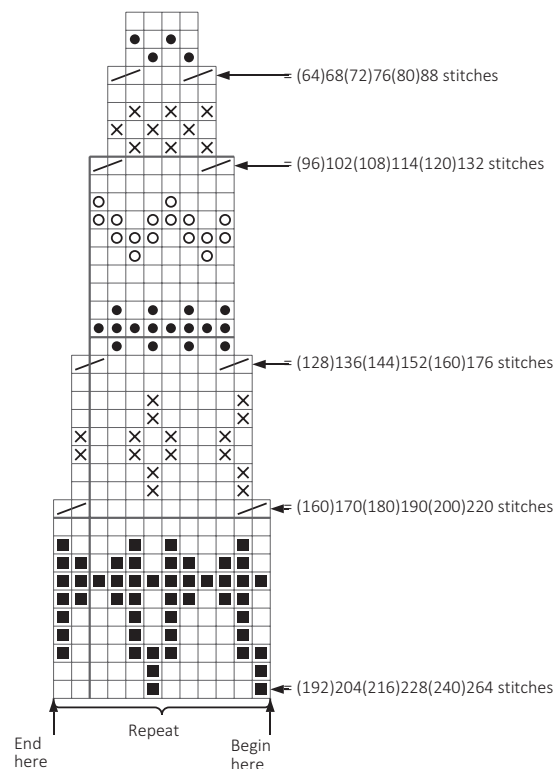
Change to 3.5 mm small circular ndl, cont
with sand shell and work (10) 10 (12) 14
(16) 16 cm ribbing k1, p1 in rnds.

Cast off loosely rib-wise, using 4 mm ndl.

Finishing:

Sew underarm openings.

Fold neck double to RS.



- Sand shell
- Burnt terracotta
- ⊗ Dusty purple
- Eucalyptus
- Old rose
- ↘ k2tog

