



NO 4 LEAH'S SWEATER W/ EYELET PATTERN

#leahshullmonstergenser
Knitting skill level: *** Medium
Instruction: Olaug Beate Bjelland

Sizes:

(2) 4 (6) 8 (10) 12 yrs

Measurements:

Chest width: (65) 68 (73) 78 (83) 86 cm

Length: (36) 40 (44) 48 (52) 54 cm, or suitable length

Sleeve length: (25) 29 (31) 35 (38) 40 cm, or suitable length

All measurements are for the finished garment = personal body measurements + movement allowance. The measurements are all according to given tension.

Description:

Work sweater from neck down and with inc for round yoke.

Yarn:

SMART (100 % wool, superwash, 50 g = 100 m)

Alternative yarn:

PEER GYNT, ALPAKKA, DUO, MERINOULL
NOTE: If alternative yarn is chosen be sure to check the yardage on label. The image of garment might change by using alternative yarn.

Yarn required:

Dusty purple #4631: (4) 5 (6) 7 (8) 9 balls

Suggested knitting needles:

Circular and double pointed 3 mm and 4 mm

Needle sizes are only suggestions. If your knitting shows tighter tension, use thicker needles, for looser tension use thinner needle

Tension:

20 sts St-st with 4 mm ndls = 10 cm

Yoke:

Beg at neck.

With 3 mm double pointed ndls cast on (76) 80 (84) 88 (92) 96 sts. Join and work (3) 3 (3) 4 (4) 4 cm ribbing k1, p1 in rnds.

Change to 4 mm circular ndl.

Insert marker at beg of rnd = middle back. Work **diagram**, and inc as shown in diagram = (190) 200 (210) 220 (230) 240 sts.

Cont St-st over all sts until work meas approx (12) 14 (15) 16 (17) 18 cm, meas from cast on at middle back.

Divide work as follows:

Work (28) 30 (31) 33 (34) 36 sts (= ½ back), transfer (38) 40 (42) 44 (46) 48 sts to extra ndl for sleeve, cast on (8) 8 (10) 12 (14) 14 new underarm sts, work (58) 60 (64) 66 (70) 72 sts (= front), transfer (38) 40 (42) 44 (46) 48 sts to spare ndl for sleeve, cast on (8) 8 (10) 12 (14) 14 new underarm sts, work (28) 30 (31) 33 (34) 36 sts (= ½ back).

Back and front:

= (130) 136 (146) 156 (166) 172 sts.

Cont St-st in rnds over all sts with 4 mm circular ndl, and insert marker at middle of one underarm = beg of rnd.

Cont until work meas approx (34) 38 (42) 45 (49) 51 cm from cast on at middle back, or (2) 2 (2) 3 (3) 3 cm before suitable length.

Change to 3 mm circular ndl and work (2) 2 (2) 3 (3) 3 cm ribbing k1, p1 in rnds.

Cast off loosely rib-wise.

Sleeves:

Transfer sts from spare ndl to 4 mm double pointed ndls, and knit up 1 st in each of the new underarm sts = (46) 48 (52) 56 (60) 62 sts.

Tips: Pick up yarn between sleeve sts and at each side of the new underarm sts, and k this st tog with next st to avoid hole in the garment.

Insert marker at middle underarm.

Work 4 cm St-st in rnds.

Dec 2 sts at middle underarm as follows: k2tog before marker, and k2tog tbl after marker.

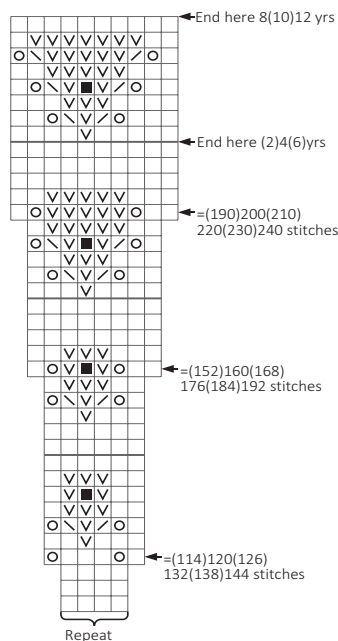
Rep dec every (5½) 6½ (5½) 5 (5) 5 cm until (40) 42 (44) 46 (48) 50 sts rem.

Cont until sleeve meas (23) 27 (29) 32 (35) 37 cm, or (2) 2 (2) 3 (3) 3 cm before suitable length.

Change to 3 mm double pointed ndls and work (2) 2 (2) 3 (3) 3 cm ribbing k1, p1 in rnds.

Cast off loosely rib-wise.

Work other sleeve in the same manner.



- k
- p
- 1 yo
- k2tog
- k2tog tbl
- Popcorn:
Work k1, k1 tbl, k1 in same stitch, transfer the 3 sts to left ndl and k3, transfer sts back to left ndl and work k3tog

