



NO 5 HONEY SWEATER

#honingenser

Knitting skill level: *** Medium

Instruction: Anita Brathetland

Sizes:

(2) 4 (6) 8 (10) 12 yrs

Measurements:

Chest width: (63) 68 (73) 77 (82) 86 cm
Length: approx (36) 40 (44) 48 (50) 52 cm
Sleeve length: (24) 28 (31) 34 (37) 40 cm,
or suitable length

All measurements are for the finished garment
= personal body measurements + movement
allowance. The measurements are all according to
given tension.

Description:

Work sweater from neck down, and with
inc for raglan. Work short rows with GSR
to create a deeper neckline at front. Cont
raglan inc, and at the same time work
diagram. Divide work for sleeves, back
and front. Work back and front in rnds
with diagram and work ribbing at hem.
Work sleeves in rnds with diagram, dec at
underarms and work ribbing.

Yarn:

SMART (100 % wool, superwash,
50 g = 100 m)

Alternative yarn:

PEER GYNT, ALPAKKA, DUO, MERINOULL
NOTE: If alternative yarn is chosen be sure to check
the yardage on label. The image of garment might
change by using alternative yarn.

Yarn required:

Ochre #2527/Eucalyptus #8051: (4) 5 (5)
6 (7) 8 balls
Amber yellow #2324/Lt.sea green #7721:
(2) 2 (2) 3 (3) 4 balls

Suggested knitting needles:

Circular and double pointed 3.5 mm and
4 mm
Needle sizes are only suggestions. If your knitting
shows tighter tension, use thicker needles, for looser
tension use thinner needle

Tension:

20 sts St-st with 4 mm ndls = 10 cm

GSR = German Short Rows:

After each turning always sl first st p-wise,
lead yarn over right ndl, hold yarn firmly
at the back until 2 loops on ndl.

The 2 loops count as 1 stitch.

When working rows/rnds with loops, work
lops tog to 1 stitch.

Inc right:

From RS: From the back insert left ndl
under yarn between 2 sts and k the new st.

From WS: From front insert left ndl under
yarn between 2 sts and p tbl the new st

Inc left:

From RS: From front insert left ndl under
yarn between 2 sts and k tbl the new st.

From WS: From the back insert left ndl
under yarn between 2 sts and p the new st.

Yoke:

With ochre/eucalyptus and 3.5 mm
circular ndl cast on (78) 80 (82) 86 (88) 92
sts. Join and work 6 cm ribbing k1, p1 in
rnds.

Work 1 rnd ribbing and insert markers for
raglan inc as follows:

Work (13) 13 (14) 14 (14) 15 sts (= ½
back), work and insert marker around
next st (= marked st), work (12) 12 (12)
14 (14) 14 sts (= sleeve), work and insert
marker around next st (= marked st),
work (25) 26 (27) 27 (28) 30 sts (= front),
work and insert marker around next st (= marked st),
work (12) 12 (12) 14 (14) 14 sts
(= sleeve), work and insert marker around
next st (= marked st), work (12) 13 (13) 13
(14) 15 sts (= ½ back).

K marked st every rnd.

Change to 4 mm circular ndl.

Rnd beg at middle back.

Work back and forth with **GSR** and inc for
raglan first from RS over left sleeve, then
from WS over right sleeve as follows:
Work until marked st, **inc right** from RS,
work marked st, **inc left** from RS, work until
next marked st, **inc right** from RS, work
marked st, **inc left** from RS, work 1 st in on
front, turn and work purl back until beg of
rnd.

Work p-wise until marked st, **inc right**
from WS, work marked st, **inc left** from
WS, work until next marked st, **inc right**
from WS, work marked st, **inc left** from
WS, work until 1 st in on front, turn and
work k-wise back until beg of rnd = 8 sts
inc.

Cont back and forth in the same manner,
but work 1 st more (3)3(4)4(4)4 times

for each turning, and work 2 sts more
(2)2(2)2(2)3 times for each turning until
a total of (6) 6 (7) 7 (7) 8 times of turning
at each side of garment = (126) 128 (138)
142 (144) 156 sts.

Work 1 rnd St-st and inc for raglan further
on RS rows = (134) 136 (146) 150 (152)
164 sts.

NOTE: Move beg of rnd to before marked
st between right sleeve and the back.

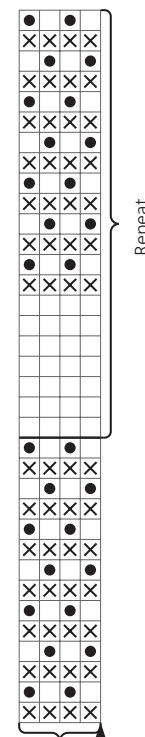
Work **diagram** and cont raglan inc on alt
rnds until a total of (14) 16 (18) 20 (22) 23
times = (190) 208 (226) 246 (264) 276 sts.

NOTE: When changing of color in
diagram, the thread for raglan inc will not
exist for last inc on rnd.

Inc by working last st before marked st as
follows: (k1, k1 tbl).

Divide work for sleeves, back and front in
this manner:

Beg with marked st and work (55) 60 (65)
69 (74) 78 sts (= the back), transfer (40)
44 (48) 54 (58) 60 sts to spare ndl for
sleeve, and cast on 8 new underarm sts,
work (55) 60 (65) 69 (74) 78 sts (= front),
transfer (40) 44 (48) 54 (58) 60 sts to
spare ndl for sleeve, and cast on 8 new
underarm sts.



Repeat Begin here

- Work k with Ochre/Eucalyptus
- Work k with Amber yellow/Lt.sea green
- Work p with Ochre/Eucalyptus

Back and front:

= (126) 136 (146) 154 (164) 172 sts.

Insert marker at middle of the 8 new underarm sts.

Round beg here under one sleeve.

Cont **diagram** until work meas (32) 36 (40) 44 (46) 48 cm, or until 4 cm before suitable length.

Work a couple of rnds with ochre/eucalyptus at end.

Change to 3.5 mm circular ndl, and work 4 cm ribbing k1, p1 in rnds.

Cast off suitable loose or work Italian cast off.

Sleeve:

Transfer sts from spare ndl to 4 mm double pointed ndls, and knit up 1 st in each new underarm st = (48) 52 (56) 62 (66) 68 sts.

TIPS: Pick up yarn between sleeve sts and at each side of the new underarm sts, and on first rnd work new st tog with next st to avoid holes in the garment.

Insert marker at middle underarm.

Cont **diagram** and when sleeve meas 2 cm dec 1 st at each side of marker as follows: sl 1 k-wise, k1, pssso, work until 2 sts before marker, k2tog.

Rep dec approx every (2) 2½ (2½) 2 (2½) 2½ cm until (32) 34 (36) 38 (40) 42 sts rem.

Cont until sleeve meas (20) 24 (27) 30 (33) 36 cm, or until 4 cm before suitable length, and end with a couple of rounds in ochre/eucalyptus.

Change to 3.5 mm double pointed ndls and work 4 cm ribbing k1, p1 in rnds.

Cast off suitable loose k-wise, or work Italian cast off.

Work other sleeve in the same manner.

Finishing:

Fold neckband to WS and sew loosely with hidden sts.

