





No 1

# TINY TROLLS CARDIGAN

Cardigan for small people  
Instruction: Sandnes Garn

## Sizes:

(2) 4 (6) 8 (10) 12 yrs

## Measurements:

Chest width: Ca (64) 67 (73) 77 (82)  
86 cm  
Length: approx (36) 40 (44) 48 (51)  
52 cm  
Sleeve length: (25) 29 (32) 35 (38) 40  
cm, or suitable length

All measurements are for the finished garment  
= personal body measurements + movement  
allowance. The measurements are all according  
to given tension

## Yarn:

SMART (100 % wool, superwash,  
50 g = 100 m)

## Alternative yarn:

PEER GYNT, ALPAKKA, DUO,  
MANDARIN MEDI, MERINOULL,  
SPØT

Note: If alternative yarn is chosen be sure to  
check the yardage on label. The image of  
garment might change by using alternate yarn.

## Yarn required:

Natural melange #2641: (4) 5 (5) 6 (6)  
7 balls  
Sea-green melange #7252: 2 balls all  
sizes  
Burnt ochre #2544: 1 ball all sizes

## Notions:

(6) 7 (7) 7 (8) 8 buttons

## Suggested knitting needles:

Circular and double pointed ndls  
3 mm and 3.5 mm  
Needle sizes are only suggestions. If your  
knitting shows tighter tension, use thicker  
needles, for looser tension use thinner needle

## Tension:

22 sts St-st with 3.5 mm ndls = 10 cm

## Edge st: k every row

## Back and front:

With sea-green melange and 3 mm  
circular ndl cast on (137) 145 (157)  
165 (177) 185 sts and work 3 cm  
ribbing back and forth as follows:

(1st row = WS) 1 edge st, p1, \*k1,  
p1\*, rep from \*-\*, end with 1 edge st.  
Change to 3.5 mm circ ndl.

Cast on 5 new sts at end of row =  
cutting sts. These sts are not included  
in diagram or given number of sts.

Insert marker on 1 st at each side with  
(34) 36 (39) 41 (44) 46 sts for each  
front and (67) 71 (77) 81 (87) 91 sts  
for the back.

Join and work diagram A in rnds.

Cont St-st with natural melange until  
work meas approx. (25) 28 (31) 34  
(36) 36 cm.

Cast off (5) 5 (7) 7 (9) 9 sts at each  
side for armholes (= marked st + (2) 2  
(3) 3 (4) 4 sts at each side).

Put garment aside and work sleeves.

## Sleeves:

With sea-green melange and 3 mm  
double pointed ndls cast on (36) 36  
(40) 40 (44) 44 sts. Join and work 3  
cm ribbing k1, p1 in rnds.

Change to 3.5 mm double pointed  
ndls. Work diagram A.

Insert marker on first st on rnd.

Cont St-st with natural melange and  
at the same time inc 1 st at each side  
of marker.

Rep inc every (4,5) 4,5 (4) 3,5 (3,5) 3  
cm until (44) 46 (52) 56 (60) 66 sts on  
rnd.

Cont until sleeve meas (25) 29 (32)  
35 (38) 40 cm, or suitable length.

Cast off (5) 5 (7) 7 (9) 9 sts at center  
underarm.

Put aside and work other sleeve the  
same.

## Yoke:

Transfer sleeve sts to the circular 3.5  
mm garment ndl, placing one sleeve  
above each armhole cast-off = (205)  
217 (233) 249 (261) 281 sts.

Rnd beg at center front.

Insert markers at each junction = 4  
markers.

With natural melange work (0) 2 (2) 0  
(4) 4 rnds St-st

## (6) 8 (10) 12 yrs:

Dec raglan as follows:

Work until 2 sts before marker, sl 1,  
k1, psso, k2tog = 8 sts dec on rnd.

Rep dec on alt rnds (2) 4 (4) 5 times =  
(217) 217 (229) 241 sts.

Work 1 rnd St-st.

## All sizes:

Work diagram B and dec as shown in  
diagram and (69) 73 (73) 73 (77) 81  
sts rem.

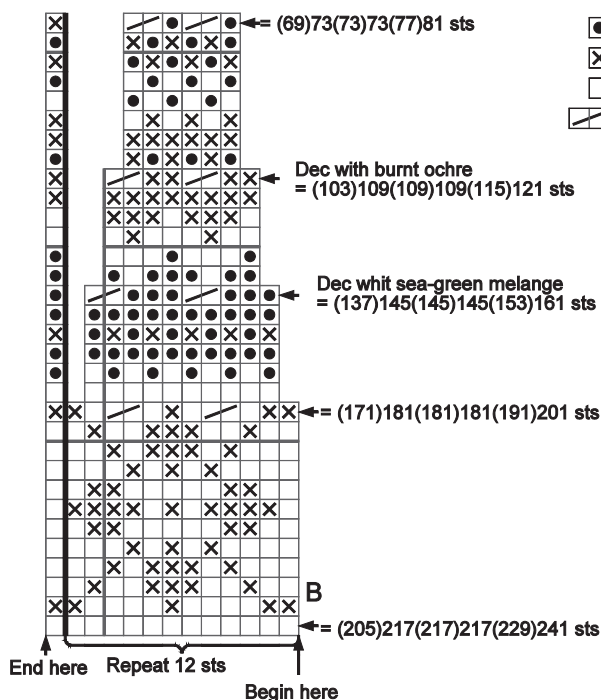
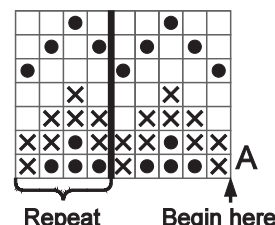
Cast off the 5 cutting sts at center  
front and leave rem sts on ndl for  
neckband.

## Finishing:

### Neckband:

Cont with sea-green and work (5) 5  
(7) 7 (7) 7 rows ribbing back and forth  
as for back and front (1st row = WS).

Cast off rib-wise.



- Sea-green melange
- ⊗ Burnt ochre
- Natural melange
- ▤ k2tog w/natural melange

With machine sew 2 seams at each side of center front on cutting sts. Cut between.

Zigzag cut edges.

**TIPS:** Work front bands and facings before cutting at center front.

**Right front band boy, left front band girl:**

With sea-green melange and 3 mm circ ndl pick up and knit 1 st every st/row but skip every 4th st/row at front edge until approx (79) 89 (97) 105 (115) 115 sts.

Number of sts a multiple of 2+1.

Work (5) 5 (7) 7 (7) 7 rows ribbing as for back and front.

Cast off rib-wise.

Work the same on other side but with (6) 7 (7) 7 (8) 8 buttonholes evenly spaced on (2nd) 2nd (4th) 4th (4th) 4th row.

The lower approx 2 cm from cast-on edge, the upper at neckband.

Buttonhole: k2tog, 1 yo.

**Facing:**

From WS, with natural melange and 3 mm circ ndl pick up and knit 1 st in every st on first row of front band. Work 4 rows St-st back and forth.

Cast off.

Fold facing over cut edge and sew with invisible sts.

Sew underarm openings.

Sew buttons on.

## TINY TROLLS HAT

*Tiny trolls, hat*

*Instruction: Sandnes Garn*

**Sizes:**

(2) 4-6 (8) 10-12 yrs

**Yarn required:**

Natural melange #2641: 1 ball all sizes

Sea-green melange #7252: 1 ball all sizes

Burnt orange #2544: 1 ball all sizes, or remnants

**Suggested knitting needles:**

Small circular ndl 3 mm and 3.5 mm

Double pointed ndls 3.5 mm.

With sea-green melange and 3 mm small circular ndl cast on (72) 80 (88) 96 sts. Join and work (5) 5 (6) 6 cm ribbing k1, p1 in rnds.

Change to 3.5 mm small circ ndl and k 1 rnd, then work diagram C.

Cont St-st and natural melange until work meas approx (18) 20 (21) 23 cm.

Dec on next rnd as follows:

\*k6, k2tog\*, rep from \*-\* in the rnd = (63) 70 (77) 84 sts.

Work 1 rnd without dec.

Next rnd: \*k5, k2tog\*, rep from \*-\* in the rnd = (54) 60 (66) 72 sts.

Rep dec on alt rnds but with 1 st less between each dec on every rnd of dec until (18) 20 (22) 24 sts rem.

K2tog in the rnd = (9) 10 (11) 12 sts.

Cut yarn, pass through rem sts, gather and fasten well.

With natural melange make a pompom and fasten to top.

**Edge st: k every row.**

**(2) 4-6 (8) yrs**

**Earflaps (work two):**

With sea-green melange and 3.5 mm double pointed ndls cast on (14) 14 (16) sts and work St-st inside 1 edge st at each side until earflap meas approx (2½) 3 (3½) cm.

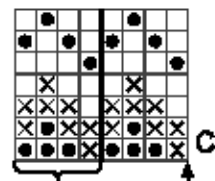
From RS work as follows:

\*1 edge st, k2tog tbl, k(8) 8 (10), k2tog, 1 edge st. Work 1 row without dec\*. Repeat from \*-\* **but** with 2 sts less between each dec every time until 4 sts rem.

Work cable over these 4 sts as follows:

K 1 row, slide all 4 sts back on the ndl, tighten yarn and k all 4 sts again. [Do not turn work]. Work in this manner on every row, always from the same side. Cont until cord meas approx (26) 30 (34) cm. Cast off.

Sew one earflap at each side of hat with approx 10-12 cm between at neck back.



Repeat Begin here

- Sea-green melange
- ⊗ Burnt ochre
- Natural melange



