



No 9

HARALD

Sweater w/crew neck
Instruction: Sandnes garn

Sizes:

(2) 4 (6) 8 (10) 12 yrs

Measurements:

Chest width: Ca (65) 69 (73) 76 (84) 87 cm

Length: (36) 40 (44) 48 (52) 52 cm

Sleeve length: (25) 29 (32) 35 (38) 40 cm, or suitable length.

All measurements are for the finished garment = personal body measurements + movement allowance. The measurements are all according to given tension.

Yarn:

SMART (100 % wool, superwash, 50 g = 100 m)

Alternative yarn:

PEER GYNT, ALPAKKA, DUO, MANDARIN MEDI, MERINOULL, SPØT

Note: If alternative yarn is chosen be sure to check the yardage on label. The image of garment might change by using alternate yarn.

Yarn required:

Dusty green #7243: (5) 6 (6) 6 (7) 8 balls

Lt.sea-green #7721: (2) 2 (2) 2 (2) 3 balls

Suggested knitting needles:

Circular and double pointed ndls
3 mm and 3.5 mm

Needle sizes are only suggestions. If your knitting shows tighter tension, use thicker needles, for looser tension use thinner needle

Tension:

22 sts St-st with 3.5 mm ndls = 10 cm

Back and front:

With dusty green and 3 mm circ ndl cast on (144) 152 (160) 168 (184) 192 sts. Join and work (4) 4 (4) 5 (5) 5 cm ribbing k1, p1 in rnds. Change to 3.5 mm circ ndl and work 1 rnd St-st. Insert marker at each side with (71) 75 (79) 83 (91) 95 sts for front and (73) 77 (81) 85 (93) 97 sts for the back. Cont with diagram **A** until work meas (22) 26 (30) 34 (38) 38 cm. Work diagram **B**, then diagram **C**, and at the same time when 4 rnds rem transfer the (15) 15 (17) 17 (19) 19

center front sts to a spare ndl for neck.

Work diagram back and forth and cast off for neck at beg of each row at each side 3 sts once, 2 sts once, 1 st once. Cont with dusty green until work meas (36) 40 (44) 48 (52) 52 cm.

Transfer rem (117) 125 (131) 139 (153) 161 sts to a spare ndl.

Sleeves:

With dusty green and 3 mm double pointed ndls cast on (36) 36 (40) 40 (40) 44 sts. Join and work (4) 4 (4) 5 (5) 5 cm ribbing k1, p1 in rnds.

Insert marker on first and last st of rnd.

Change to 3.5 mm double pointed ndls and work 1 rnd St-st.

Cont with diagram **A** until sleeve meas approx (5) 5 (6) 6 (6) 6 cm. Inc 1 st at each side of marker. Rep inc every 2 cm until (52) 56 (60) 64 (68) 70 sts on rnd, at the same time when work meas (19) 23 (26) 29 (32) 34 cm work diagram **B**. Cont until sleeve meas (25) 29 (32) 35 (38) 40 cm, or suitable length

Turn sleeve inside out and work 6 rows St-st back and forth for facing. Row beg at center underarm.

Cast off. Work other sleeve the same

Finishing:

Meas top of sleeve and mark depth of armhole at each side of garment. With machine sew 2 seams on each side of center at sides. Cut between seams.

Graft tog approx (22) 24 (25) 27 (30) 32 shoulder sts at each side.

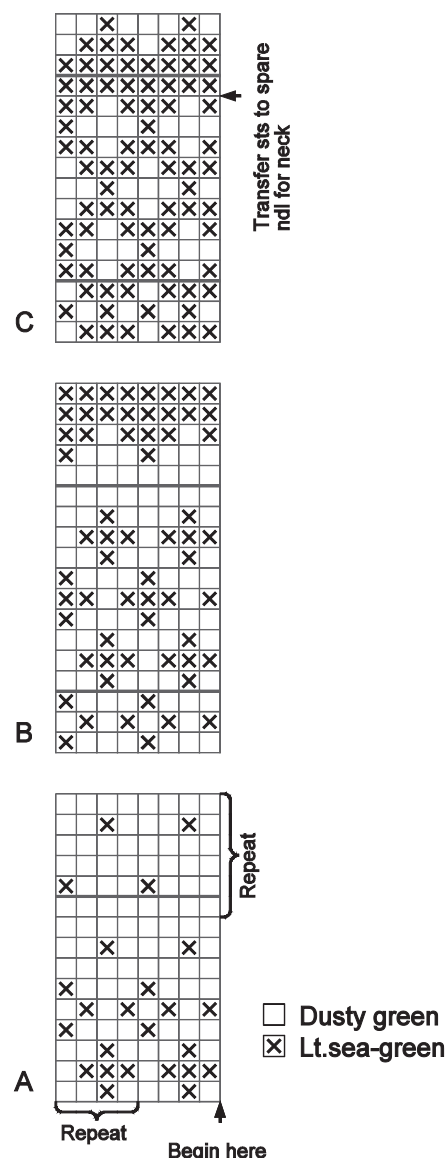
Neckband:

With dusty green and 3 mm circ ndl knit up 1 st every st/row but skip every 4th st/row at neck and also knit sts from spare ndl. Work 1 row St-st and at the same time adjust number of sts on ndl to (82) 86 (90) 94 (98) 100. Work 6 cm ribbing k1, p1 back and forth

Cast off loosely rib-wise.

Fold neckband and sew loosely on WS.

Sew sleeves on and fold facing over cut edge and sew with invisible sts.

COWL, HAT
AND MITTENS**Sizes:**

(2-4) 6-8 (10-12) yrs

Yarn:

SMART (100 % wool superwash, 50 g = 100 m)

Yarn required:

Lt.sea-green #7721: (3) 4 (4) balls

Work all items in ribbing: k1, p1

COWL:

With dusty green and 3.5 mm circ ndl cast on (84) 94 (102) sts. Join and work (14) 16 (18) cm ribbing k1, p1 in rnds. Cast off rib-wise.

HAT:

With dusty green and 3 mm double pointed ndls cast on (88) 96 (104) sts. Join and work (3) 3 (4) cm ribbing k1, p1 in rnds [= first fold].

Change to 3.5 mm double pointed ndls and work (3) 3 (4) cm [= second fold].

Cont until work meas (22) (23) 24 cm. Dec as follows: *p1, sl1 k-wise, k2tog, psso*, rep from *-* in the rnd = (44) 48 (52) sts.

Work 4 rnds sts as they appear.

Rep dec = (22) 24 (26) sts on rnd.

Work 2 rnds sts as they appear

Rep dec = (11) 12 (13) sts on rnd. Cut yarn, pass through sts, gather and fasten well.

Finishing:

Turn folds twice to RS.

MITTENS:

With dusty green and 3 mm double pointed ndls cast on (36) 40 (44) sts. Join and work (5) 6 (7) cm ribbing k1, p1 in rnds.

Change to 3.5 mm double pointed ndls. Join and work (1) 1 (2) rnds ribbing.

Insert one marker at beg of rnd, and one after (13) 15 (17) sts = thumb sts.

On alt rnds inc 1 st at each side of thumb sts (6) 7 (8) times and work new sts in ribbing as they appear.

Transfer the (13) 15 (17) thumb sts to a separate thread. Cont in rnds over rem sts, **at the same time** cast on 1 new st at thumb = (36) 40 (44) sts.

Cont until work meas (7) 8 (9) cm from thumb sts. Dec as follows: *p1, sl1 k-wise, k2tog, psso*, rep from *-* in the rnd = (18) 20 (22) sts.

Work sts as they appear for 2 rnds.

Then (k2tog) in the rnd = (9) 10 (11) sts.

Cut yarn, pass through sts, gather and fasten well.

Thumb: Transfer the (13) 15 (17) thumb sts to 3.5 mm double pointed ndls and cast on 1 new st at junction. Work ribbing in rnds until thumb meas approx (3) 3,5 (4) cm or suitable length. Work (k2tog) in the rnd = (7) 8 (9) sts. Work 1 rnd, then (k2tog) in the

rnd = (4) 4 (5) sts. Cut yarn, pass through sts, gather and fasten well.

Work other mitten the same but with thumb to the other side.

