





No 16

CARDIGAN  
W/SNOW  
CRYSTALSCardigan w/set in sleeves  
Instruction: Sandnes Garn**Sizes:**

(S) M (L) XL (XXL)

**Measurements:**

Bust: (92) 103 (108) 119 (124) cm

Length: approx (69) 70 (71) 72 (73) cm

Sleeve length: 48 cm, or suitable length

All measurements are for the finished garment = personal body measurements + movement allowance. The measurements are all according to given tension

**Yarn:**

ALPAKKA (100 % alpaca, 50 g = 110 m)

**Alternative yarn:**

PEER GYNT, SMART, DUO, MANDARIN MEDI, MERINOULL, SPØT

Note: If alternative yarn is chosen be sure to check the yardage on label. The image of garment might change by using alternative yarn

**Yarn required:**

Charcoal melange #1088: (9) 10 (10) 11 (12) balls

Emerald #7755: (4) 4 (5) 5 (5) balls

**Notions:**

9 buttons

**Suggested knitting needles:**

Circular and double pointed 3 mm and 3.5 mm

Needle sizes are only suggestions. If your knitting shows tighter tension, use thicker needles, for looser tension use thinner needle.

**Tension:**

22 sts St-st with 3.5 mm ndls = 10 cm

**Edge st: k every row****Back and front:**

With charcoal melange and 3 mm circ ndl cast on (193) 217 (229) 253 (265) sts and work 4 cm ribbing back and

forth as follows: (1<sup>st</sup> row = WS) 1 edge sts, p1, \*k1, p1\*, rep from \*-\*, end with 1 edge st.

Change to 3.5 mm circ ndl and cast on 5 sts (= cutting sts. These sts are not included in given number of sts or pattern).

Insert marker at each side with (47) 53 (56) 62 (65) sts for each front and (99) 111 (117) 129 (135) sts for the back.

Join and work St-st and **diagram** until work meas (62) 63 (64) 65 (66) cm.Cont **diagram**, and **at the same time** cast off the (21) 21 (21) 23 (23) center front sts for neck (= cutting sts + (8) 8 (8) 9 (9) sts at each side).

Cont back and forth, and cast off for neck at beg of every row at each side 3 sts (1)2(2)2(2) times, 2 sts (2)1(1)1(2) times, 1 st (2)2(2)2(1) time = (9) 10 (10) 10 (11) sts cast off at each side.

Cont until work meas (69) 70 (71) 72 (73) cm.

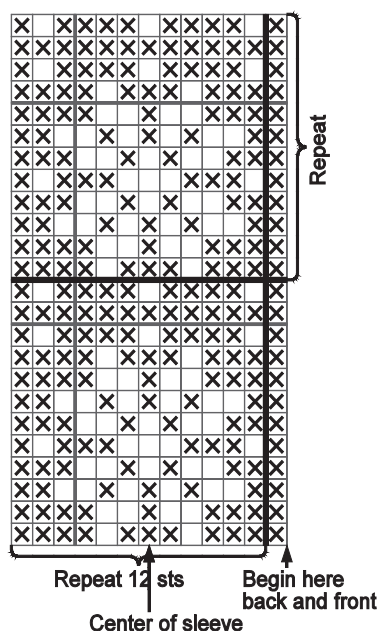
Cast off rem (159) 181 (193) 215 (225) sts.

**Sleeves:**

With charcoal melange and 3 mm double pointed ndls cast on (46) 48 (50) 52 (54) sts. Join and work 4 cm ribbing k1, p1 in rnds.

Change to 3.5 mm double pointed ndls, k 1 rnd, **while** inc evenly spaced to (54) 56 (58) 60 (62) sts.

Insert marker on last st of rnd, and with charcoal p this st throughout work. This st is not included in pattern.

Count from center of sleeve to establish beg of pattern. Cont St-st and **diagram** and when sleeve meas 6 cm inc 1 st at each side of marked st. Rep inc every (3) 2,5 (2,5) 2 (2) cm until (80) 84 (88) 94 (98) sts on rnd.

Cont until sleeve meas 48 cm, or suitable length.

Turn work inside out, work 5 rows St-st back and forth for facing. Cast off loosely.

Work other sleeve the same.

**Finishing:**

Meas top of sleeve. Insert marker at sides of garment for depth of armholes. With machine sew 2 seams at each side of armhole markers and at each side of center front on cutting sts. Cut between seams.

Zigzag cut edges

**TIPS:** Work front bands and facings before cutting at center front.

Sew shoulder seams.

**Neckband:**

With charcoal melange and 3 mm circ ndl pick up and knit approx 1 st every st/row, but skip every 4th st/row at neck to approx. (91) 95 (95) 99 (103) sts.

Number of sts a multiple of 2+1.

Work 4 cm ribbing as for back and front.

Cast off rib-wise.

**Left front band:**

With charcoal melange and 3 mm circ ndl pick up and knit approx 1 st every st/row, but skip every 4th st/row at left front edge to approx (131) 133 (135) 137 (139) sts.

Work 4 cm ribbing as for back and front.

Cast off rib-wise.

**Right front band:**Work as left front band but with 9 buttonholes evenly spaced on 6<sup>th</sup> row. the lower at center of ribbing, The upper at neckband.**Buttonhole:** Cast off 2 sts. Next row: Cast on 2 sts above the cast-off.**Facing:**

From WS, with charcoal melange and 3 mm circ ndl knit up 1 st every st on first row of front band. Work 5 rows St-st back and forth.

Cast off.

Sew sleeves on.

Fold facings over cut edges and sew with hidden sts.

Sew buttons on.

☐ Emerald  
☒ Charcoal melange