





No 3

# SNOWBELL SKIRT

*Beg at hem and work to waist*  
*Instruction: Olaug Beate Bjelland*

## Sizes:

(2) 4 (6) 8 (10) 12 yrs

## Measurements:

Waist: (51) 55 (58) 62 (65) 69 cm

Hem width: (89) 95 (102) 108 (115)  
121 cm

Length: (22) 24 (28) 30 (34) 38 cm

All measurements are for the finished garment  
= personal body measurements + movement  
allowance. The measurements are all according  
to given tension.

## Yarn:

MERINOULL (100 % merino wool,  
50 g = 105 m)

## Alternative yarn:

PEER GYNT, SMART, ALPAKKA,  
DUO

Note: If alternative yarn is chosen be sure to  
check the yardage on label. The image of  
garment might change by using alternative yarn

## Yarn required:

Dusty pastel green #8521: (3) 4 (4) 5  
(5) 6 balls

## Notions:

Optional: Elastic band in suitable  
length for waist

## Suggested knitting needles:

Circular 3 mm, 3.5 mm and 4 mm

Needle sizes are only suggestions. If your  
knitting shows tighter tension, use thicker  
needles, for looser tension use thinner needle

## Tension:

22 sts St-st with 3.5 mm ndls = 10 cm

Beg at hem.

With 4 mm circular ndl cast on (196)  
210 (224) 238 (252) 266 sts. Join and  
k 1 rnd, p 1 rnd, k 1 rnd, p 1 rnd = 2  
ridges.

Change to 3.5 mm circular ndl.

Work diagram **A** until skirt meas  
approx (13) 15 (19) 21 (25) 29 cm.

Work diagram **B** and dec as shown in  
diagram = (112) 120 (128) 136 (144)  
152 sts.

Skirt meas approx (20) 22 (26) 28  
(32) 36 cm.

Insert marker at each side with (56)  
60 (64) 68 (72) 76 sts for each part.

## 4 - 8 - 12 yrs:

Move side markers 2 sts to the right,  
for pattern to be centered and with  
identical back and front.

## All sizes:

Change to 3 mm circular ndl

Work 2 cm St-st for band, but after 1  
cm work 2 holes at middle front for  
cord. Count from middle front to work  
2 holes with 2 sts between.

Holes: k2tog, 1 yo, k2 (= middle front),  
1 yo, k2tog tbl.

P 1 rnd (= folding rnd), end with 2 cm  
St-st for facing.

Cast off loosely.

## Finishing:

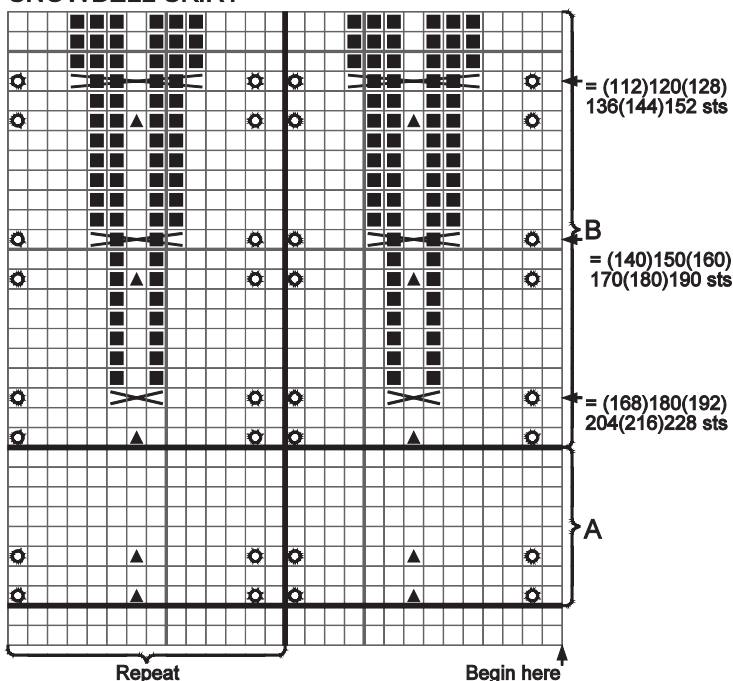
Fold facing to WS and sew with  
hidden sts.

Pass elastic band through waist band.

Twist double yarn for cord at suitable  
length and pass through band.

Tie bow at front.

## SNOWBELL SKIRT



- k
- ⊙ 1 yo
- ▲ sl 1 k-wise, k2tog, pssso
- ▤ sl 2 k-wise, k3tog, pssso
- No stitch, skip