





No 13

PUTTY  
SWEATERSweater w/round yoke  
Instruction: Sandnes Garn

## Sizes:

(1) 2 (4) 6 (8) 10 (12) yrs

## Measurements:

Chest width: (60) 64 (69) 72 (76) 81 (86) cm

Hem width: (63) 67 (71) 75 (79) 84 (89) cm

Length: ca (32) 36 (40) 44 (48) 50 (52) cm

Sleeve length: approx (21) 24 (27) 30 (33) 36 (40) cm, or suitable length

All measurements are for the finished garment = personal body measurements + movement allowance. The measurements are all according to given tension.

## Yarn:

SUNDAY (100% merino wool,  
50 g = 235 m)

## Yarn required:

Brown sugar #2543: (3) 3 (4) 4 (5) 6 (7) balls  
Lt.beige #3021: 1 ball all sizes

## Suggested knitting needles:

Circular and double pointed 3 mm  
Needle sizes are only suggestions. If your knitting shows tighter tension, use thicker needles, for looser tension use thinner needle

## Tension:

28 sts St-st with 3 mm ndls = 10 cm

## 1 ridge worked in rnd:

k 1 rnd, p 1 rnd.

## Work sweater from neck down.

With brown sugar and 3 mm circular ndl cast on (82) 86 (90) 94 (98) 102 (106) sts. Join and work 1½ cm St-st (= facing), p 1 rnd (= folding rnd). All further measurements from this rnd.

Work 1½ cm St-st.

Cont diagram A and inc as shown in diagram = (256) 280 (304) 326 (346) 366 (388) sts.

## Sizes (6) 8 (10) 12 yrs:

Cont St-st until garment meas (15) 16 (17) 18 cm.

## All sizes:

Divide work as follows: Work (76) 82 (88) 93 (99) 105 (112) sts (= back), transfer (52) 58 (64) 70 (74) 78 (82) sts to spare ndl for sleeve, cast on 8

new underarm sts, work (76) 82 (88) 93 (99) 105 (112) sts (= front), transfer (52) 58 (64) 70 (74) 78 (82) sts to spare ndl for sleeve, cast on 8 new underarm sts.

## Back and front:

= (168) 180 (192) 202 (214) 226 (240) sts.

All further measurements from highest point of shoulder and straight down.

Insert marker around 2 sts at each side with (82) 88 (94) 99 (105) 111 (118) sts for each part.

With brown sugar cont St-st in rnds until garment meas approx (16) 19 (22) 25 (26) 27 (29) cm.

Inc 1 st at each side of markers (inc: pick up yarn between 2 sts and k tbl this new st) = 4 sts inc.

Cont until work meas (21) 25 (29) 33 (37) 39 (41) cm, rep inc once more = (176) 188 (200) 210 (222) 234 (248) sts.

Cont until garment meas approx (22) 26 (30) 34 (38) 40 (42) cm, or approx 10 cm before finished length.

Work diagram B, and rep a total of 3 times.

Work 5 ridges.

Cast off.

## Sleeves:

Transfer sleeve sts to 3 mm double

pointed ndls, and with brown sugar knit up 8 new middle underarm sts = (60) 66 (72) 78 (82) 86 (90) sts.

**TIPS:** Pick up yarn between sleeve sts and the new underarm sts at each side, and on first rnd k this st tog with next st to avoid hole in garment.

Insert marker around 2 middle underarm sts.

Cont St-st in rnds until sleeve meas 2 cm.

Cast off 1 st at each side of marker. Rep dec approx every 2 cm until (46) 48 (52) 54 (56) 58 (60) sts rem.

Cont until sleeve meas approx (17) 20 (23) 26 (29) 32 (36) cm, or 4 cm before suitable length.

Work diagram C.

Dec 4 sts evenly spaced = (42) 44 (48) 50 (52) 54 (56) sts.

Work 1½ cm St-st, p 1 rnd (= folding rnd), work 1½ cm St-st.

Cast off loosely.

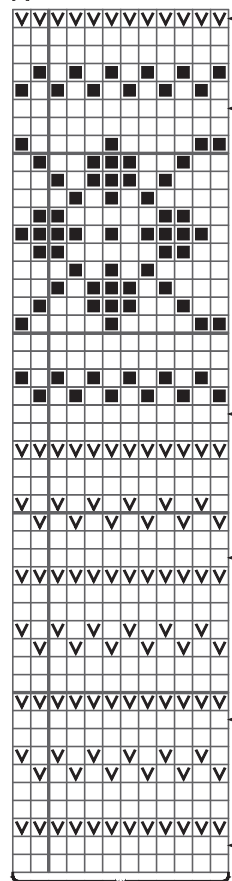
Work other sleeve in the same manner.

## Finishing:

Sew underarm openings.

Fold facings to WS and sew loosely with hidden sts.

A



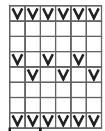
Repeat

Inc (26)32(32)36(40)46(50) sts evenly spaced  
= (256)280(304)326(346)366(388) stsInc (26)32(32)38(42)44(50) sts evenly spaced  
= (230)248(272)290(306)320(338) sts

□ Brown sugar: k  
 ▣ Brown sugar: p  
 ■ Lt.beige: k

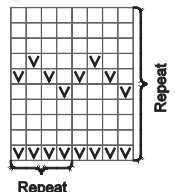
Inc (24)28(34)42(42)44(46) sts evenly spaced  
= (204)216(240)252(264)276(288) stsInc (30)30(38)38(42)44(46) sts evenly spaced  
= (180)188(208)210(222)232(242) stsInc (34)34(40)40(42)44(46) sts evenly spaced  
= (150)158(168)172(180)188(196) stsInc (34)38(38)38(40)42(44) sts evenly spaced  
= (116)124(128)132(138)144(150) sts

C



Repeat

B



Repeat



